

Install Guide

Front Lower Control Arms

- with New Bushings

This instruction sheet should be used in conjunction with the workshop manual and proper safety procedures followed.

Application - Toyota Hilux 2015-on
- Toyota Fortuner 2015-on

Always refer complete catalogue listing

- Raise vehicle evenly and safely support.

Never rely on a Jack only.

Tip - best to lubricate all threads prior to disassemble.

- Proceed to remove front wheels.
- Un-bolt ball joint from hub (re-use OE bolts here)
- Un-bolt camber bolts.

Important - note camber bolt orientation in vehicle before removing.

- Lightly grease new bushing side faces with supplied grease.

Contents - 2x complete lower arms
- with new bushings
- with new camber bolts
- grease



- Lightly grease new bushing side faces with supplied grease.
- Proceed to bolt up new control arms.

Refer page 2

It is recommended that a licenced workshop or tradesperson carry out the above procedure and that workshop manual and relevant safety procedures are followed in addition to the above.

Install Guide

Front Lower Control Arms

- with New Bushings

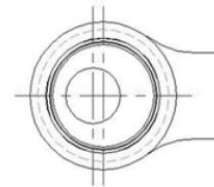
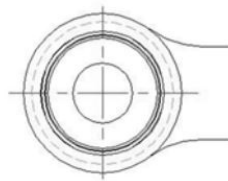
This instruction sheet should be used in conjunction with the workshop manual and proper safety procedures followed.

Continued - page 2

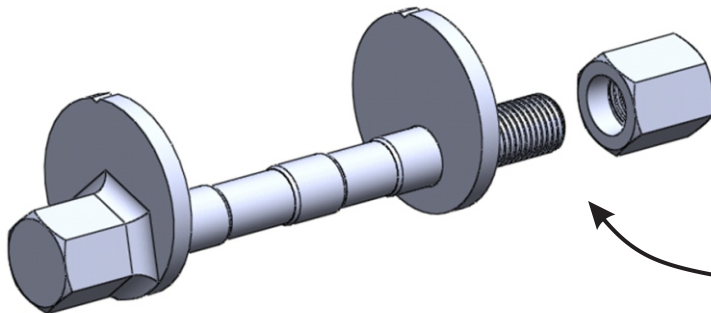
(For arms supplied with off-set bushings)
Image of off-set bushing as view from rear of RH arm

- Lubricate new bolt threads.

Important - note supplied nuts have a thread recess - refer image below.



Gives 0.6 degree camber change with maximum offset



- Bolt up ball joint with original bolts.
- A wheel alignment is required immediately after install.
- Re-check all bolts after 100kms



It is recommended that a licenced workshop or tradesperson carry out the above procedure and that workshop manual and relevant safety procedures are followed in addition to the above.