

Install Guide

Front Lower Control Arms

- with Offset Bushings

This instruction sheet should be used in conjunction with the workshop manual and proper safety procedures followed.

Important - these arms are best suited for lifted trucks

- Raise vehicle evenly and safely support.

Never rely on a Jack only.

Tip - best to lubricate all threads prior to disassemble.

- Proceed to remove front wheels.
- Un-bolt ball joint from hub (re-use OE bolts here)
- Un-bolt camber bolts.

Important - note camber bolt orientation in vehicle before removing.

- Lightly grease new bushing side faces with supplied grease.

Application - Toyota Prado 2002-10
 - Toyota 4 Runner 2002-09
 - Toyota Tacoma 2004-15

Always refer complete catalogue listing

Contents - 2x complete lower arms
 - with offset bushings
 - with new camber bolts
 - grease



- Lightly grease new bushing side faces with supplied grease.
- Proceed to bolt up new control arms.

Refer page 2

It is recommended that a licenced workshop or tradesperson carry out the above procedure and that workshop manual and relevant safety procedures are followed in addition to the above.

Install Guide

Front Lower Control Arms - with Offset Bushings

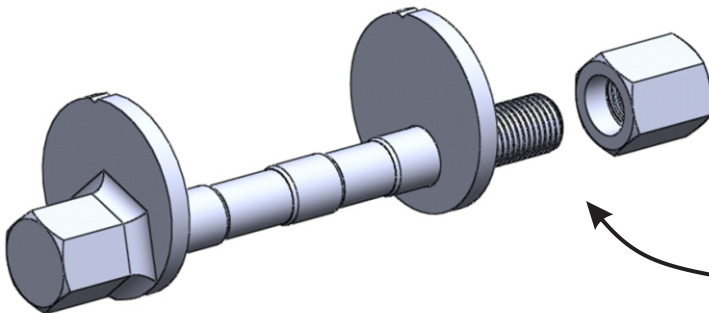
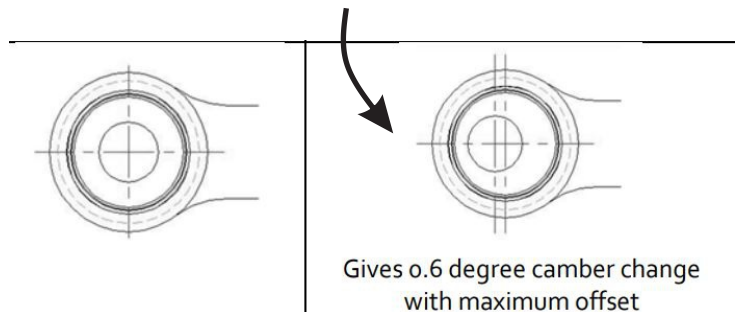
This instruction sheet should be used in conjunction with the workshop manual and proper safety procedures followed.

Continued - page 2

- Lubricate new bolt threads.

Important - note supplied nuts have a thread recess - refer image below.

Image of off-set bushing - as view from rear of RH arm



During assemble - note thread recess in nut. This should be screwed on first.

- Bolt up ball joint with original bolts.
- A wheel alignment is required immediately after install.
- Re-check all bolts after 100kms



It is recommended that a licenced workshop or tradesperson carry out the above procedure and that workshop manual and relevant safety procedures are followed in addition to the above.