

Fitting Instructions #RC0019RZIS

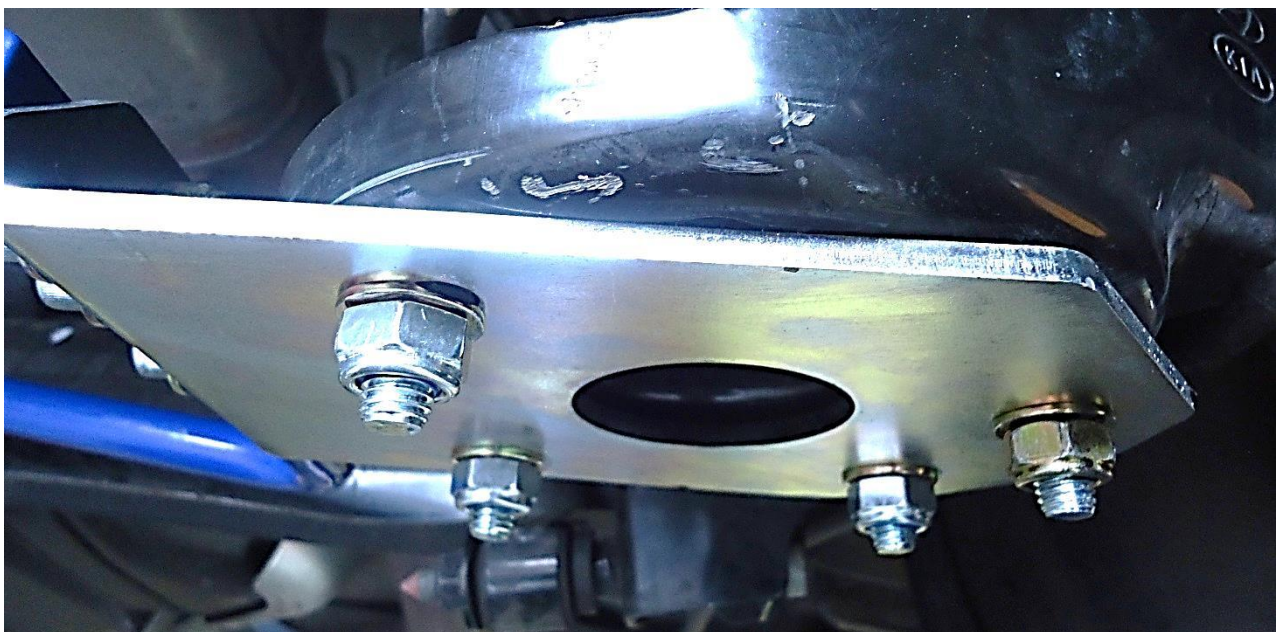
Hyundai Veloster

Sway Bar Stabiliser Kit

This work should be carried out by qualified persons.

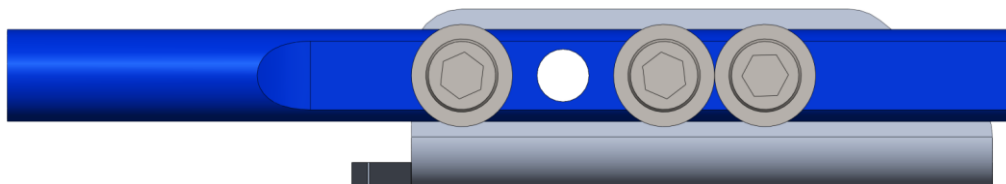
- Raise vehicle and support on Jack stands;
- Supporting the rear beam, undo and remove the bottom shock bolts;
- Lower the beam far enough to remove the springs. Be careful not to over stretch the brake hoses or the ABS cables;
- Familiarise yourself with the hardware supplied. Note: Brackets and rings are marked Left and Right;
- Place the ring (CB241L,CB241R) on top of the spring seat .The 2 inner holes on each side of the spring seat have to be drilled out to 10mm;
- Now attach the lower bracket, (CB240L CB240R) using 10mm Button head bolts supplied. Bolts are fitted from the top. Leave the bolts loose at this stage. Repeat on the other side;

Note: Fold on the bracket points up.



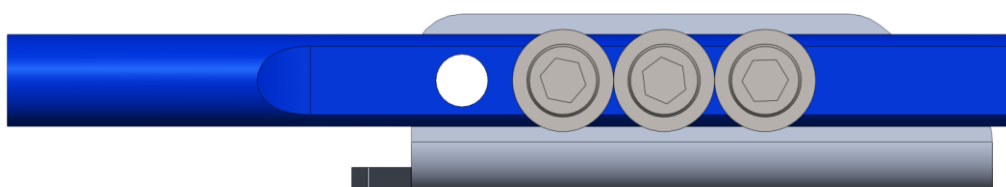
- Depending on bar position required attach the bar using 3x10mm Cap screws per side.

Leave bolts loose;



Full hard position

← Front of car



Standard position

- Tighten all Bracket bolts first and then tighten the bar bolts. Torque Button head bolts to approximately 24.5nm and 10mm cap screws approximately 46nm.

Note: A drop of Loctite is recommended on all bolts.



Please drive carefully to get used to the new handling characteristics.

Super Pro Roll Control does not take responsibility for incorrect fitment or misuse of this product.

Pictures are indicative and are not necessarily exact to the B.O.M.