

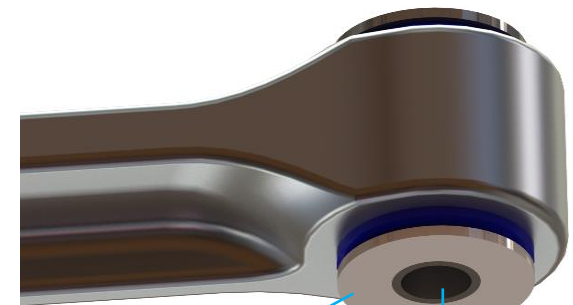
Fitting Instructions #4643IS

Chevrolet Corvette (1988 to 1997 models)

Rear Lower Control Arm Bush Kit



- With the vehicle on jack stands/hoist, remove the rear lower control arms;
- Remove original shell parts from the housing with the use of a hydraulic press and suitable pressing tools;
- Clean housing areas to remove any old original bushing materials;
- Apply the grease supplied to outside and inside surfaces of the bushes and the outside of the steel crush tubes;
- Install the new bushes according to Figure 01, placing the '4643' bush in the outer position and the '4946' bush in the inner position;
- Press fit the washers onto the steps on the 'Crush Tube 2' ends, see Figure 02;
- Refit the rear lower control arms to the car and tighten all the bolts;
- Ensure that all fasteners are torque to manufacturer's specification and carry out a wheel alignment.



Insert washer either side of crush tube

Figure 02 – Bush installation

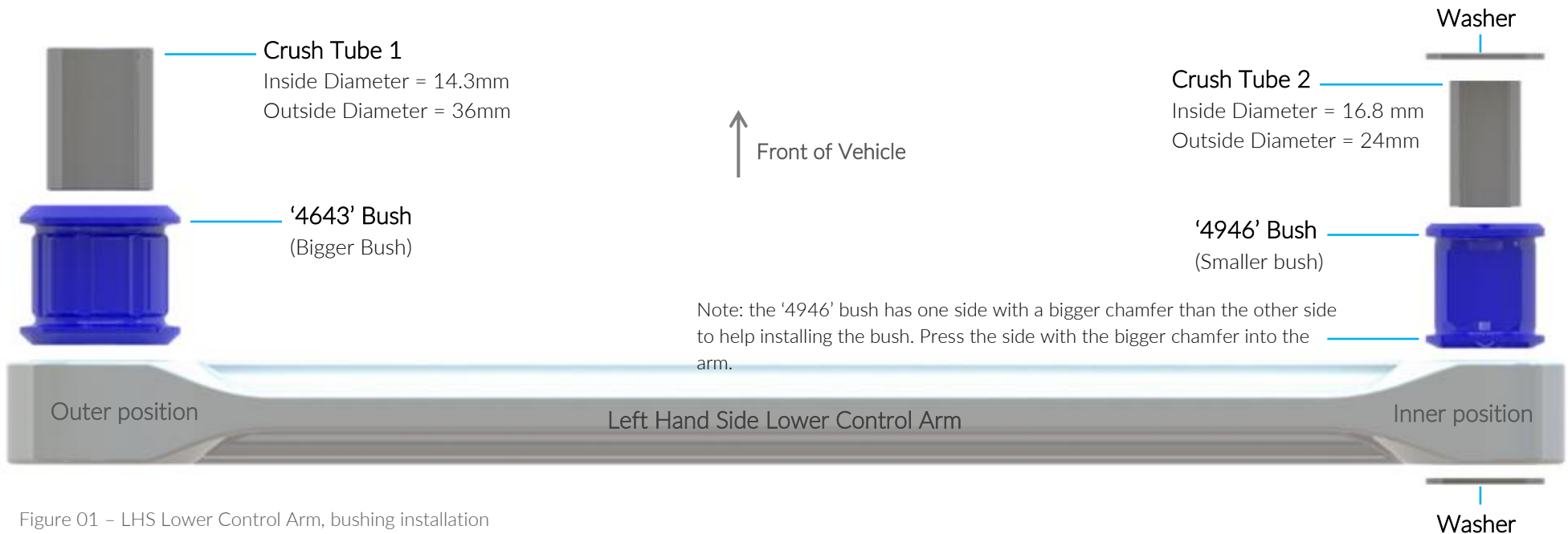


Figure 01 – LHS Lower Control Arm, bushing installation