

Fitting Instructions #2485IS

Holden Colorado , Isuzu Dmax

Power Steering Rack Bushes All

The O.E. bushes can be removed without the rack having to be removed from the vehicle. Remove any bash guards below the steering rack to gain access.

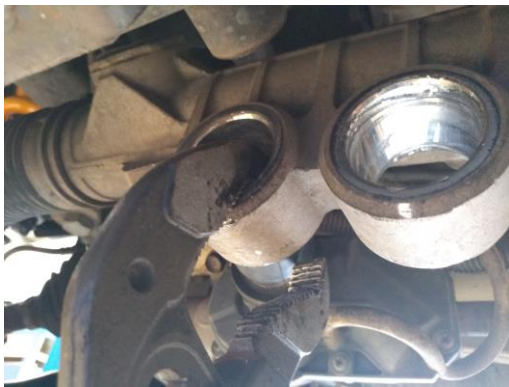
If the vehicle is fitted with a diff drop kit, steering rack access can be compromised.

Remove the bolts going through the bushes and brackets and set aside

You should now be able to manipulate the rack to gain access to remove the bushes

Drivers side bushes

- The OE bushes are rubber with a bonded steel tube and can be extracted using a pair of multi grips as shown below



- Clean up bores and insert bushes (2483) ensuring to grease the outside and bore of the bush using grease supplied.
- Insert crush tube into bushes using multi grips or similar.

Passenger side bush

- Replace OE bush with part "2484".

To reinstall the rack, install the bracket on the passenger side as before.

Place the supplied washers over the end of the bushes / crush tubes between the rack and the frame and tighten down.

Ensure all manufacturer bolt torque specs are adhered to.

Reinstall any bash plates removed.

A wheel alignment is required after installation.