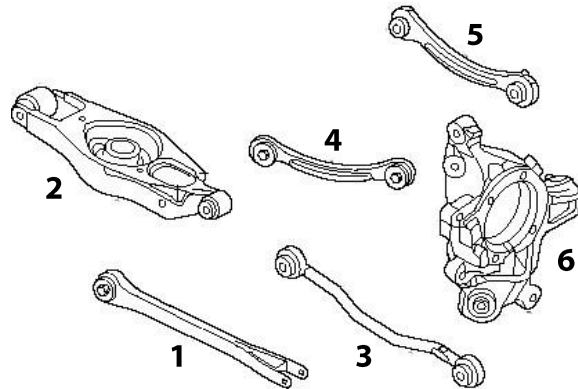


Fitting Instructions #3057IS

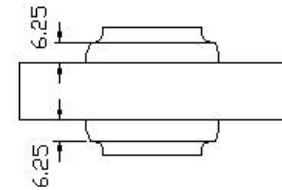
Chrysler 300C

Rear Upper Trailing Arm Bushes / Rear Upper Control Arm Bushes

Left Hand side Shown



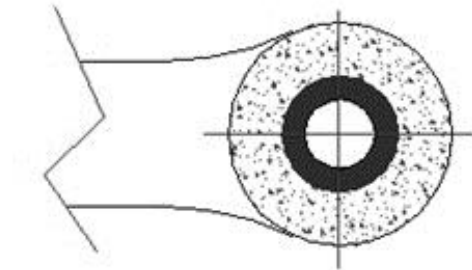
- Rear Suspension:
- 1) Lower trailing arm
 - 2) Lower control arm
 - 3) Toe control arm
 - 4) Upper trailing arm
 - 5) Upper control arm
 - 6) Hub assembly



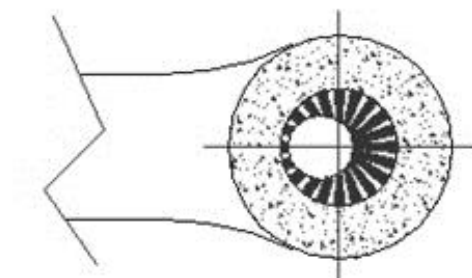
Note if SPF3064K has been purchased you will need to also buy SPF3057K to fit to the inner position. Also it is recommended you purchase SPF3060XK to maintain correct toe settings.

Note: Polyurethane bushings must be fitted to both sides of the vehicle.

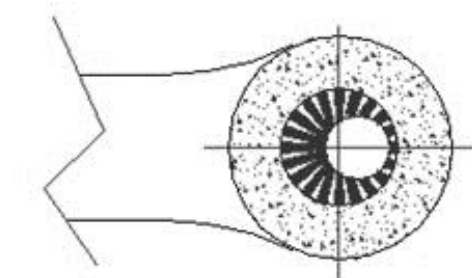
- Wheel-align the vehicle before the job is started and note settings;
- With the vehicle on jack stands/hoist, remove the wheels, remove the upper control arms and loosen off the upper trailing arm bolts. To remove the upper trailing arm front bolt the sub frame has to be lowered. Mark the tail shaft and remove from pinion. Put an axle stand or similar under the front of the diff and loosen off the rear sub frame bolts (leave at least one third of thread engaged). Now fully remove the front sub frame bolts and lower the sub frame until the front bolt can be removed, then refit the sub frame and the drive shaft. It is recommended to refit the front upper trailing arm bolts in reverse for ease of removal in the future;
- Use a hydraulic press or similar and remove O.E. bushes;
- With reference to the diagrams and the kit you have purchased, push in the new bushes leaving 6.25mm of shell either side. If camber +/- is required the offset bushes must be fitted to both the upper control arm outer position and the upper trailing arm rear position;
- Use the grease supplied to lubricate the bore of the bush and the outside of the crush tube and push in the crush tube;
- Refit control/trailing arms to the car, tighten all bolts to manufactures torque settings;
- Carry out a wheel alignment.



Standard Replacement



Camber Increase



Camber Decrease