

# Fitting Instructions #TRC460IS

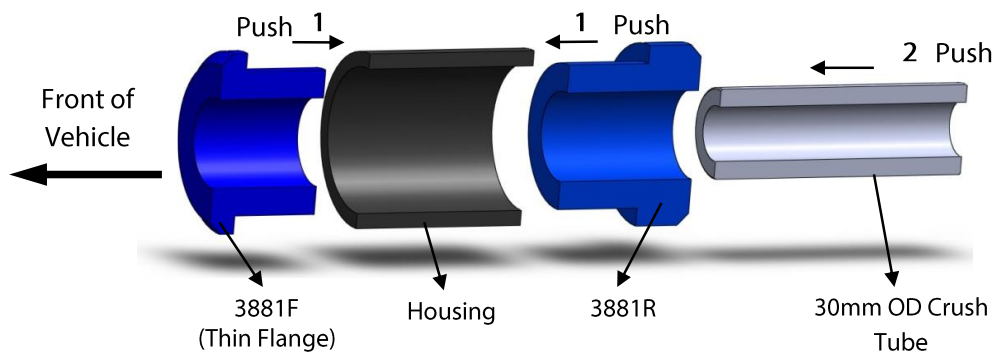
## Toyota Landcruiser 100 Series

### Control Arm Lower Complete Assembly Kit

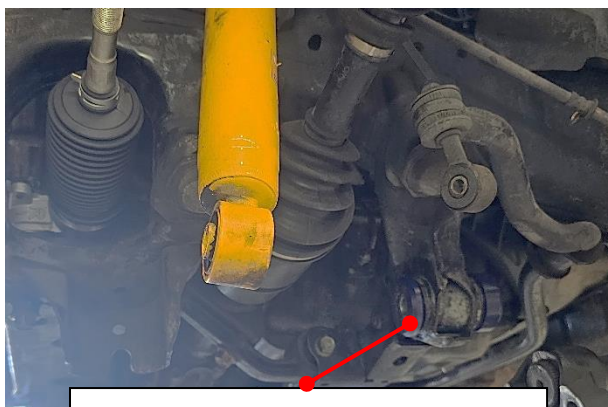


**NOTE:** These components must be fitted by qualified persons only, to factory specifications, as per factory service manual.

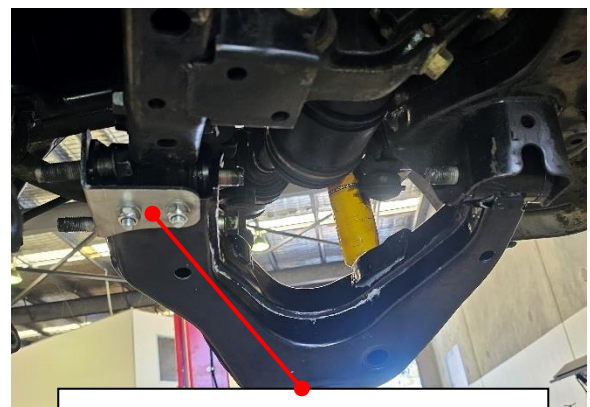
1. Before beginning any alignment work, always check for loose or worn parts, proper tyre pressures, and odd tyre wear patterns. Replace any loose or worn parts before setting alignment.
2. Raise vehicle by the chassis and support with jack stands. Remove front tyre and wheel assemblies.
3. Remove the front sway bar end links and lower strut mounting bolts from the lower control arm.
4. Remove the brake calliper, axle nut and then the brake rotor.
5. Remove the brake line bracket and ABS wiring.
6. Remove the tie rod outer joint from the steering knuckle.
7. Remove front upper & lower control arm split pin and loosen the nut but do not remove. This will keep the steering knuckle from falling when performing the next step.
8. Support the steering knuckle and break the ball joint taper. It is recommended to do the lower control arm first then followed by the upper control arm. Careful to not hit on the thread and boot.
9. Remove the steering knuckle and then, remove the factory front lower control arms.
10. Install the front lower control arm rear bush (supplied loose), which is located in the chassis. An air chisel would be an ideal tool to remove the factory bushes out from the chassis.
  - a. **Note:** Clean housing areas to remove any old original bushing materials before installing new bushes. Apply the grease supplied to all mating surfaces, then push the new bushes and crush tube (as shown in the diagram below)



11. Install the new control arms to the vehicle in reverse order.
  - a. **Note:** SuperPro recommend installing Torsion Bar Reinforcing Kit on modified vehicle.
12. Reuse OE bolts, coated with anti-seize and tighten to manufacturer's torque settings.
13. Adjust the torsion bar to the desired height, carry out a wheel alignment and road test the vehicle.
14. Re-check all bolts after 1000kms.



Front Lower Control Arm, Rear Bush  
(In Chassis) – Supplied Loose



Torsion Bar Reinforcing Kit (TB-LCB).  
Recommended for modified vehicle