

Fitting Instructions #TRC1219IS

VW Golf / Audi A3 S3

Adjustable Rear Control Arm (upper)



Contents - 2x live adjustable control arms
- complete with low compliance bushings.
- ABS wire brackets x4
(suit either MK5/6 or MK7/8)

- Raise vehicle evenly and safely support.

Never rely on a jack only.

- Proceed to remove rear wheels.

Note ABS wires

- Gently pop ABS wires from the OE plastic bracket.
- Next proceed to loosen and unbolt the outer mount bolt.

Refer RH image.



- Access the inner mount bolt with a ratchet and socket. Loosen nut from rear side.

Refer LH image.

Refer page 2 -

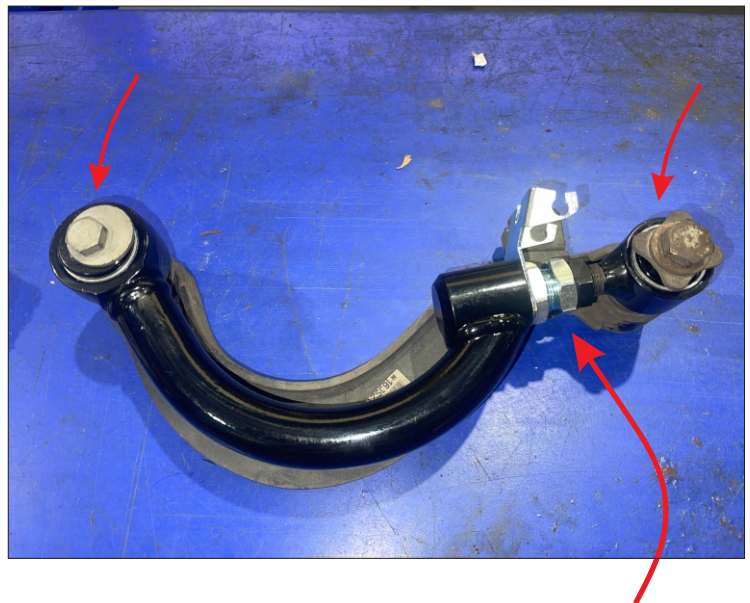
It is recommended that a licenced workshop or tradesperson carry out the above procedure and that workshop manual and relevant safety procedures are followed in addition to the above.

Fitting Instructions #TRC1219IS
VW Golf / Audi A3 S3
Adjustable Rear Control Arm (upper)

Superpro
Suspension Parts

- Place the new **Superpro** arm over the OE arm.
- Adjust the turn buckle until you can place the original bolts in each hole.

Refer RH image.

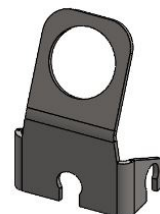


IMPORTANT - check there is even thread exposed on both small and large diameters



- Grease inner bushing internal diameter and side face with supplied grease only.
- Install control arm using the original bolts. Tighten to manufacturers spec

Note - select the appropriate ABS wire bracket based on your vehicle.
(MK5/6 shown in LH image)



- A wheel alignment is required immediately after install.
- Rec-check all bolts after 500kms

It is recommended that a licenced workshop or tradesperson carry out the above procedure and that workshop manual and relevant safety procedures are followed in addition to the above.