

Fitting Instructions #TRC1211IS

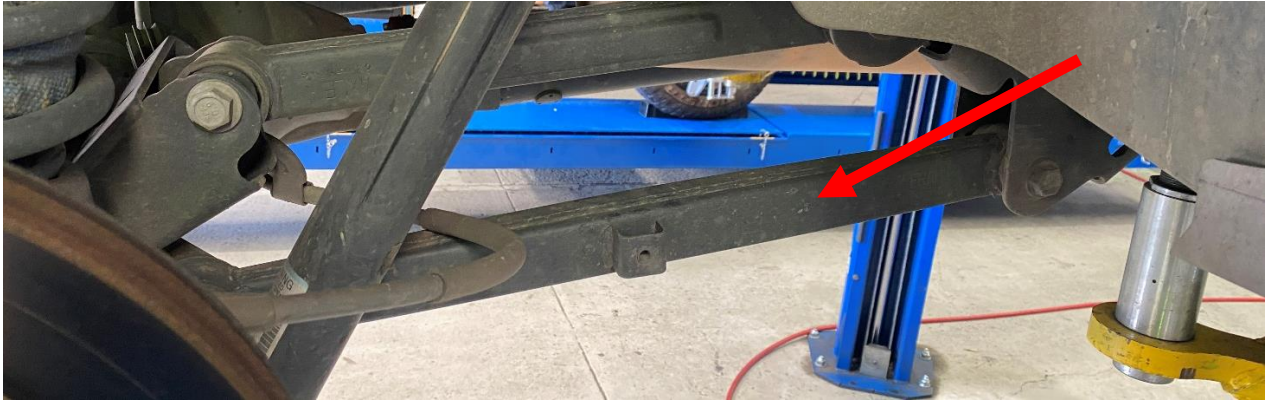
RAM 1500 DS/DT | Jeep Gladiator JT

Rear Lower Trailing Arm



NOTE: These components must be fitted by qualified persons only, to factory specifications, as per the factory service manual. Photos are an indication and may vary slightly in appearance from the actual product.

1. This job is easiest to do either on a 4-post hoist or on the ground.
2. Starting on one side, remove the factory Rear Lower Trailing Arm by removing the two bolts holding it in. Take note of which way the bolts are installed.



3. Clean the clevis area of the chassis and the diff to remove any dirt or debris.
4. Remove the crush tube from the bushings and apply the included grease to the bore and faces of the bushings.
5. Install the new Rear Lower Trailing Arm to the vehicle with the larger bushing on the chassis side of the arm and the bracket facing outward.
6. Tighten down the OE bolts to the OE specifications of 100Nm (74 ft.lbs)
7. If the vehicle uses the handbrake cable bracket, this can be attached to the new arm using the included bracket and re-using the OE bolt.



8. Repeat the process for the other arm.
9. Manufacturer's torque setting must be used on all bolts.
10. Recheck all bolts and lock nut after 1000km or 1 month;