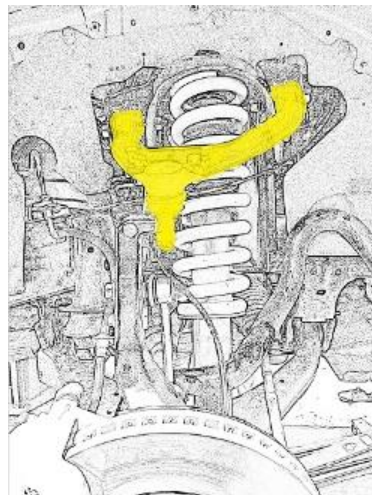


# Fitting Instructions #TRC6590IS

Izuzu Dmax/Mazda BT50 2020-On

## Front Upper Control Arms



***NOTE: These components must be fitted by qualified persons only, to factory specifications, as per the factory service manual. Photos are an indication and may vary slightly in appearance from the actual product***

1. Raise vehicle by the chassis and support on a hoist.
2. Remove the front wheels.
3. Unclip and remove ABS sensor wire from the upper control arm. The bracket in the rear position will be required for the new arm. The front position can be unclipped from the bracket.
4. Remove split pin and nut holding the ball joint to the upright. Discard the split pin. Break the taper and the upright will become free from the upper control arm. The Arm should pop upwards and the upright will be supported by the sway bar.



5. Undo both bolts from the upper control arm to frame mounts. The arm will now be free and can be removed.
6. Install the new ball joint with the supplied hardware onto the new Super Pro arm.
7. Installation is the reverse off removal with the new arm.

# Fitting Instructions #TRC6590IS

Izuzu Dmax/Mazda BT50 2020-On

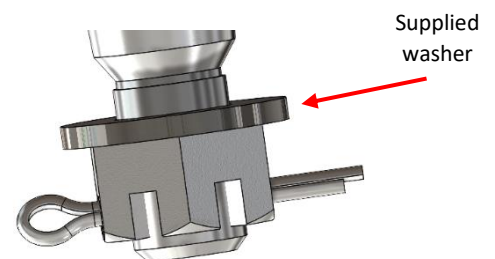
## Front Upper Control Arms



8. Lubricate the crush tubes and ends of the bushings using the supplied grease. Bolt the new arm into the frame, reusing the bolts that were removed.



9. Install the stud of the ball joint into the upright.
10. Install the included washer onto the ball joint stud before the castle nut.
11. Tighten the castle nut and install a new split pin.
12. Re-install the ABS cable. Clip-in the ABS sensor wire to the front bracket and bolt the rear bracket to the arm, ensuring that the cable is not tight at any point.



13. The installation is now complete and should look like the picture below.
14. Install wheel and lower vehicle to ground. Check for any clearance issues.
15. Manufacture's torque setting must be used on all bolts.
16. Recheck all bolts after 100km or 1 month;