

Fitting Instructions #TRC1012

Ford Falcon/Territory

Trailing blade kit

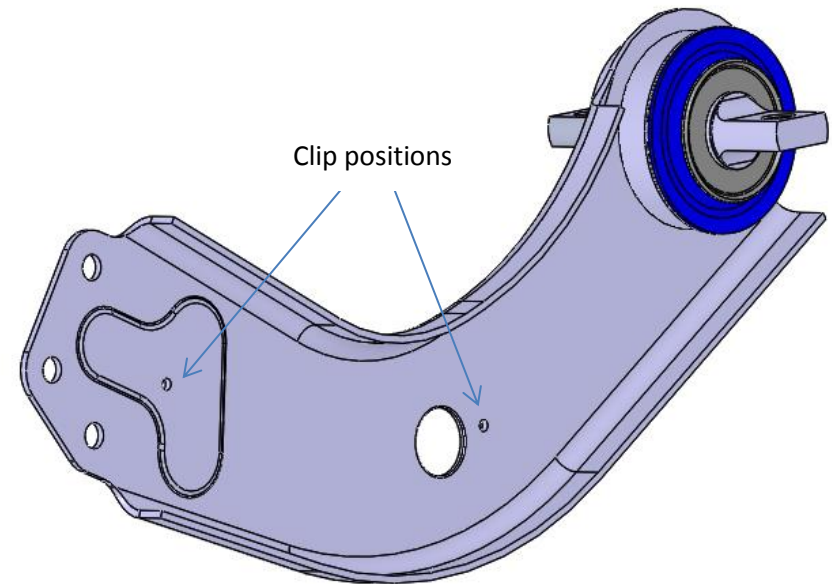


Note: SuperPro bushings must be fitted to both sides of the vehicle.

- Wheel-align the vehicle before the job is started and note settings;
- Jack the vehicle up and support on jack stands/hoist;
- Using factory manual, remove the blade control arms of the rear suspension;

Note 1: For Territories and Falcons, remove ABS cable from arm using a small straight screw driver to take clips apart as per figure 1

Note 2: For Falcons, the ABS cable will need to be disconnected from the body before disconnecting the trailing blade



LHS shown

- Replace old the blade control arm with new blade control arms from Superpro kit to the vehicle and tighten all bolts to manufacture's torque settings and carry out wheel alignment.
- Using supplied cable ties, secure ABS cable using holes in arm as per figures 2-4 below.

Fitting Instructions #TRC1012

Ford Falcon/Territory

Trailing blade kit



Insert screwdriver
here and lever out

Figure 1 - Plastic clip holding ABS cable in place. Outside view

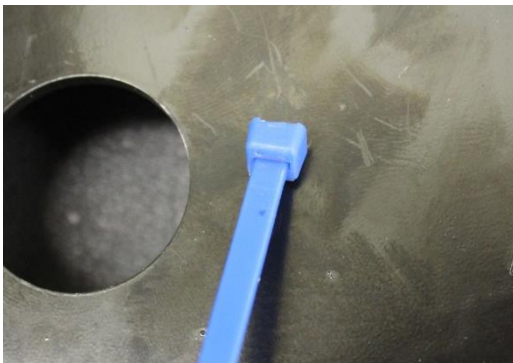


Figure 2 – view from outside of car



Figure 3 – view from inside of car



Figure 4 – cable tie tightened around cable

Figure 2 - 4 - outside and inside configuration, feed ABS cable through loop and tighten to hold cable in place, cut excess cable tie