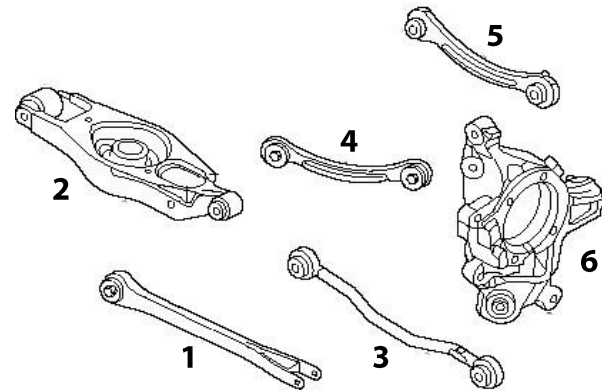


Fitting Instructions #3060IS

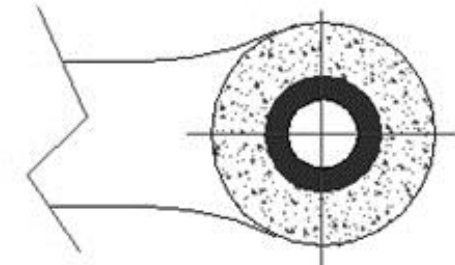
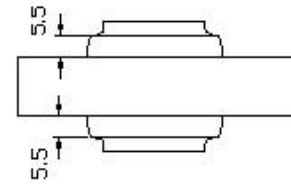
Chrysler 300C

Rear Toe Control Arm Bushes

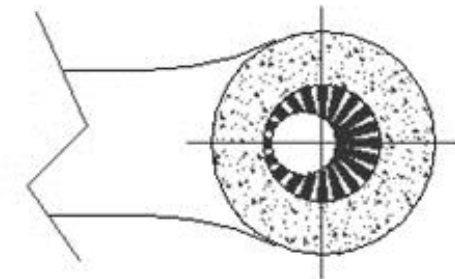


- Rear Suspension
- 1) Lower trailing arm
 - 2) Lower control arm
 - 3) Toe control arm
 - 4) Upper trailing arm
 - 5) Upper control arm
 - 6) Hub assembly

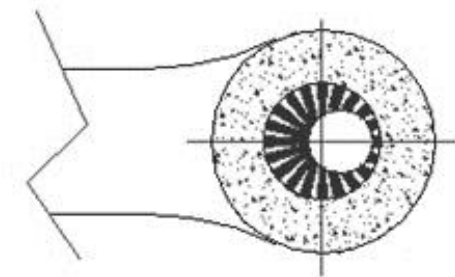
Left Hand side Shown



Standard Replacement



Camber Increase



Camber Decrease

Note: Polyurethane bushings must be fitted to both sides of the vehicle.

Support vehicle on jack stands/hoist, remove wheels, mark the arms inner and outer, front and rear, left and right, then remove toe control arm making sure to remove the ABS cable from the arm;

Press out the outer bushes and replace with the bush marked '3061' note this shell is stepped and should leave an even amount of shell protruding either side of the arm (5.5mm);

Press out the inner bushes, you will notice that the new inner bush marked '3060' has a larger bore diameter and also has uneven flange thicknesses. Therefore the larger flange, which is marked front, must be fitted towards the front of the car. Note the new bush has a stepped shell and should leave an even amount of shell protruding either side of the arm (5.5mm);

Use the grease supplied to lubricate the bore of the bush and the outside of the crush tubes. With reference to the diagrams fit the crush tubes to gain the desired results.

Note: SPF3060XK is to be fitted in conjunction with SPF3064K camber adjusting kit, this allows for correct toe setting to be achieved.

Refit arms and tighten to manufactures torque settings. Carry out wheel alignment