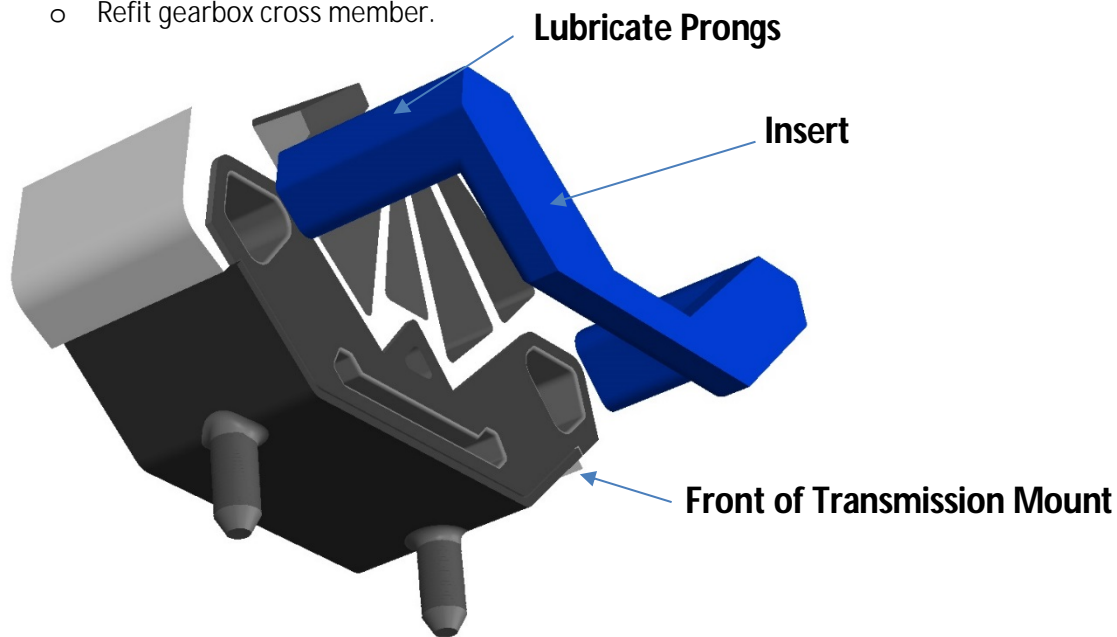
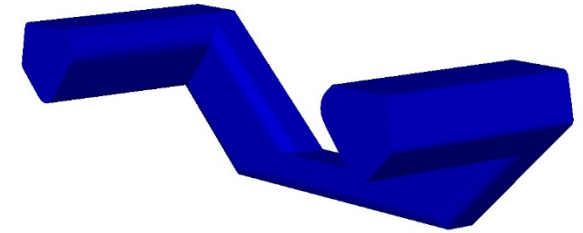


# Fitting Instructions #5061IS

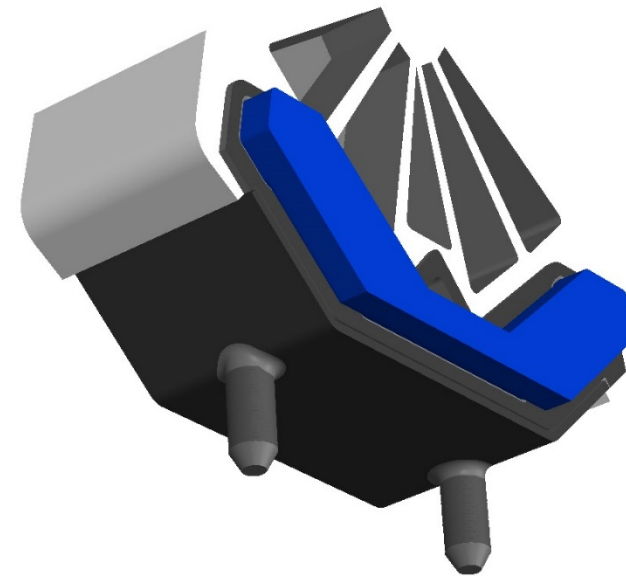
Ford Mustang 2011 on

## *Positive Shift Mount Insert*

- With the vehicle supported on chassis stands or hoist support the rear of the gearbox allowing access to the cross member
- Remove the 4 cross member to chassis bolts and the 2 cross member to transmission mount nuts
- Remove cross member
- Apply the grease supplied to the two prongs of the insert
- Noting orientation of the insert using the images below as a guide push the insert into the transmission mount from the front ensuring it locates up against the transmission mount
- Refit gearbox cross member.



**View of underside of transmission mount**



**Insert Installed**