

Fitting Instructions #5290IS

Nissan Navara NP300

Extension Brackets Rear Sway bar, Head-Light Sensor and Brake Line Spacer

N.B: This instruction sheet should be used in conjunction with the workshop manual and proper safety procedures followed.

Brake Line Spacer

- Jack the vehicle up and support on jack stands/hoist.
- Remove the original brake line retaining clip, see Figure 01.
- Install the '4954' brake line spacer, see Figure 01.
- Install the original brake line retaining clip onto the '4954' spacer, see Figure 03.

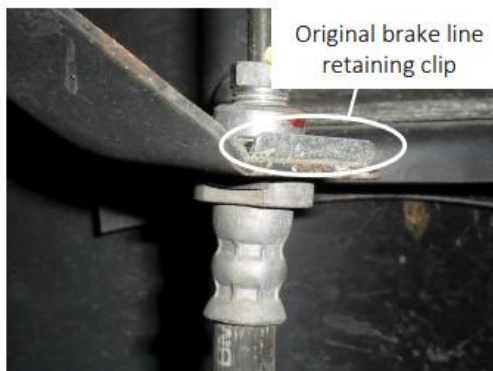


Figure 01 – Brake line, original setting



Figure 02 – Installing '4954' brake line spacer

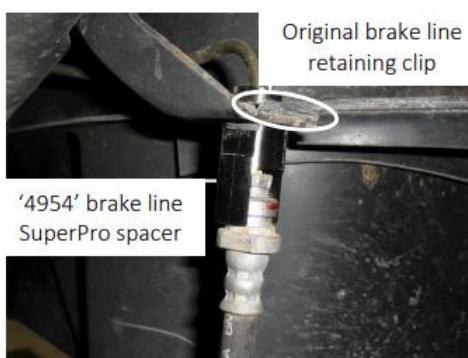


Figure 03 – Installed '4954' brake line spacer

Fitting Instructions #5290IS

Note - this kit can be installed at ride height or while lifted.



Application - Nissan Navara
- NP300

Always refer complete catalogue listing

Contents - 2x Link brackets

- 1x Head-light sensor bracket

- 2x M12 x 35mm bolt

- 1x M8 x 25mm bolt

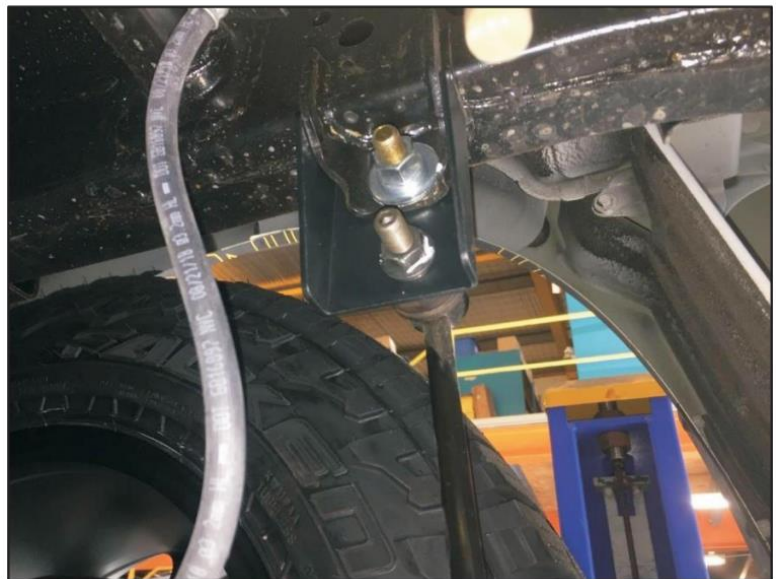
- 2x Flat washers

- 2x Spring washers

- Un-bolt upper swaybar link nut.

- Using supplied brackets, M12 bolts and washers - bolt up bracket as per image.
- Place washers and nut on the inside.
- Bolt up original swaybar link to lower hole as per image.

RH side bracket shown





Application - Nissan Navara
- NP300
Always refer complete catalogue listing
Contents - 2x Link brackets
- 1x Head-light sensor bracket
Lower hole suited for OE height

- 2x M12 x 35mm bolt
- 1x M8 x 25mm bolt
- 2x Flat washers
- 2x Spring washers
- Un-bolt original head-light bracket

Discard bracket but retain original bolt.

Note – supplied bracket has 2 holds.

Upper hole suited for 2 inch [50mm] lift.

Lower hole suited for OE height.

- Bolt up new supplied bracket as per image.

Use supplied M8 bolt

