

Fitting Instructions #5237IS

Suzuki Jimny

Radius Arm to Diff Mount Bushing Castor increase



This kit is designed to provide an increase in castor of approximately $2\frac{1}{2}^{\circ}$ for the front axle.

- This kit will be required if the vehicle has been raised from its original height
- Wheel-align the vehicle before the job is started and note the castor settings;
- **Important** Only one radius arm should be removed from the vehicle at a time this step should be performed with the vehicle on the ground or on a four-post hoist.
- Remove arm from vehicle
- Press the original bushings from the arm and discard
- Deburr the housings as necessary.
- Lay the arm over the 1:1 template supplied and time the bushes into the arm housing, so they align with the centre marks on the sheet.
- When aligned mark the bushing and the arm with a paint pen or similar See FIG 1. Note the bushes have a reduced outer diameter shell to aid timing to the arm
- Press bushings into arm so the shell part sits flush with the arm see FIG 2
- For reassembly it is recommended that you bolt the arm to the diff then raise the rear of the arm up to the chassis and bolt in place.
- Repeat disassembly and bush fit up procedure to the other arm
- Wheel align vehicle and note settings – you should achieve a castor increase of at least $2\frac{1}{2}^{\circ}$
- Retention all bolts at 1000km check.

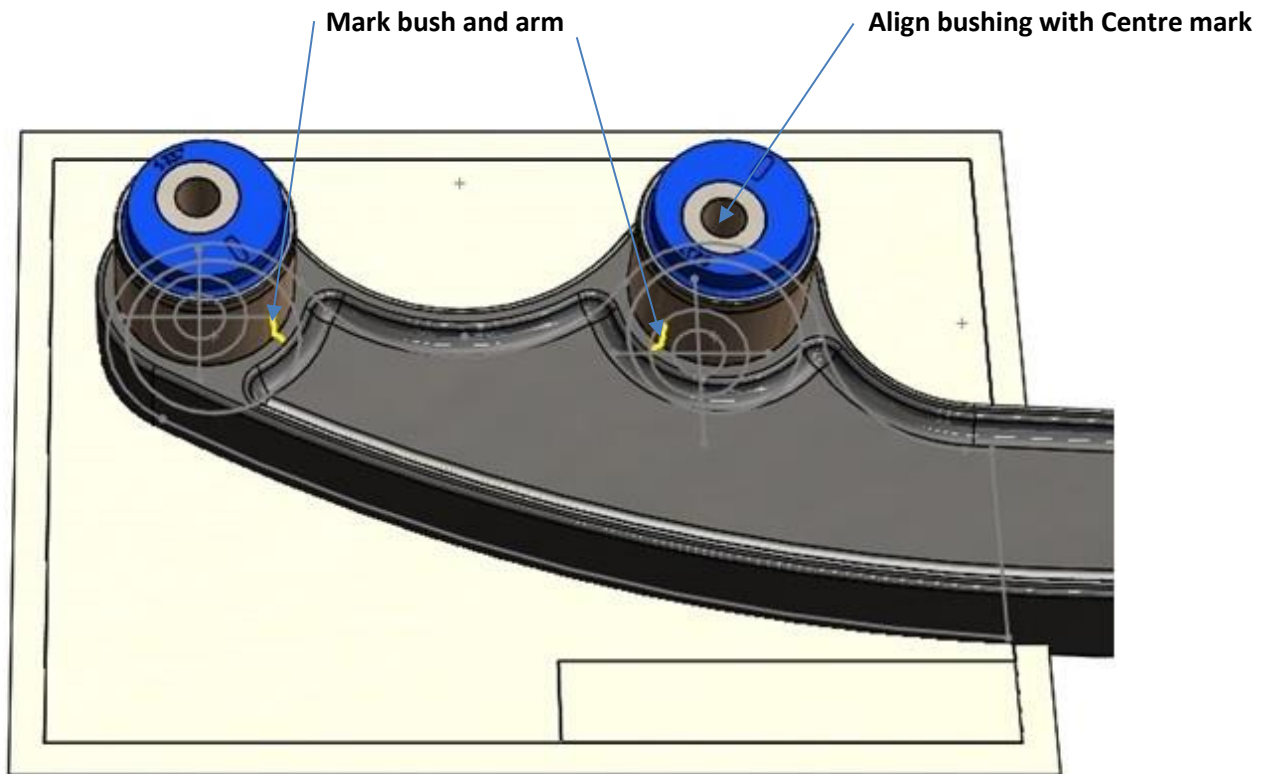


FIG 1: Example of aligning bushing and the arm

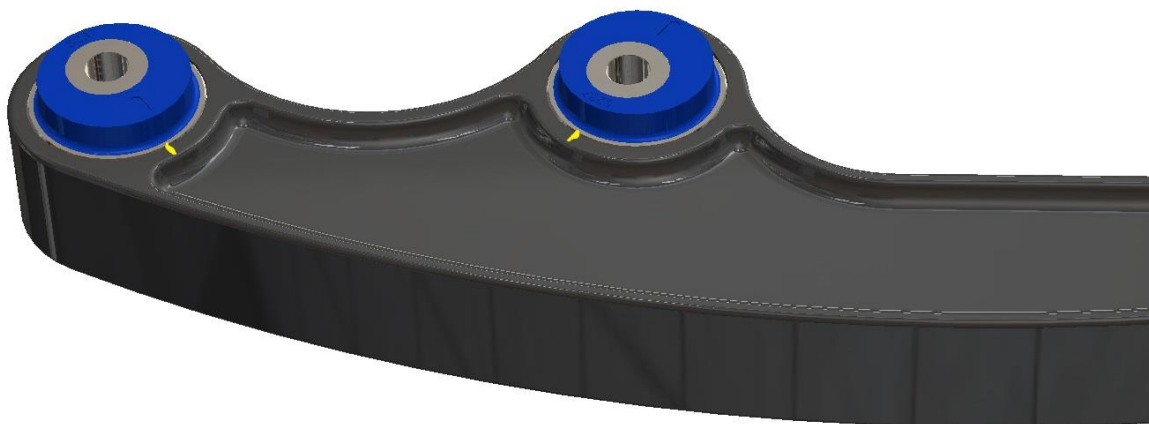


FIG 2: Press bushes till the shell is flush with the arm