

Fitting Instructions #1721XIS

Nissan Patrol / Toyota Landcruiser, Prado

Radius Arm To Diff Mount Kit

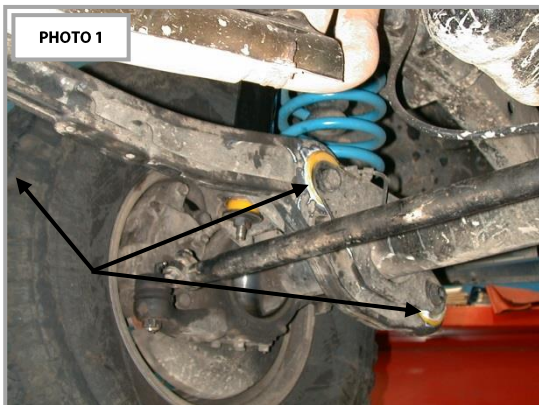


Photo 1: Removal of the trailing arms can be performed with the vehicle at ride height and on the ground as long as only one trailing arm is removed at a time and a bottle jack is used to stop the differential from twisting.

Remove the nut or nut and bolt retaining the front trailing arm to chassis mount (Nissan is a pin mount with a nut, Toyota is a bush mount with a nut and bolt).

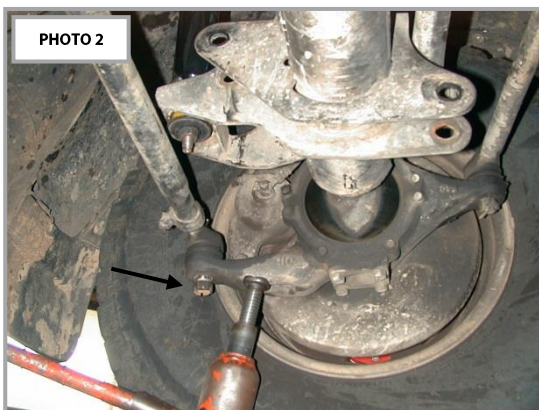


Photo 2: Remove the front trailing arm to differential mounting nuts and bolts (24mm). It may be necessary to loosen the nuts on both side arms and use a bottle jack under the differential to stop twist. On Nissan it may be necessary to remove the track rod on one side to allow the arm to be removed and on LWB model remove the stabilizer bar.

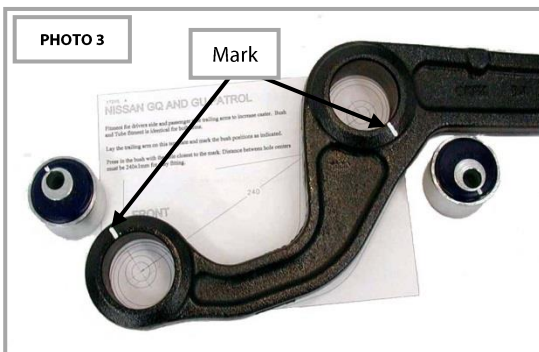


Photo 3: Remove the front trailing arm and press out the two trailing arm to differential bushes. Lay the arm on the template provided, and scribe the alignment marks as shown in photo. This will be the guide for locating the offset bushes.



Photo 4: Press in the offset bush aligning the marks on the bush and the arm. (Note: Alignment mark located opposite the part number on the poly). Check that the distance between the hole centres is as recommended by the template. This will ensure ease of refitting.

Refit the arm in the reverse order of removal, repeat the procedure for the other arm and recheck and record the wheel alignment figures.

Our test Vehicle – Landcruiser 80 Series

Before -	+0.3	-0.5
After -	+4.3	+3.4

Note: Tighten the radius arm to diff mounting bolts to correct torque settings for the vehicle.

Toyota 80 & 100 Series
Nissan Patrol

- 171 to 172Nm.
- 157 to 215Nm.