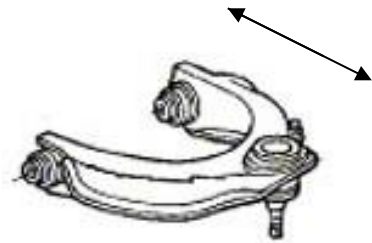


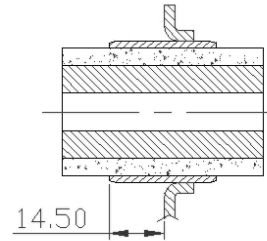
# Fitting Instructions #3072IS

## Honda Accord

### Front Upper Control Arm Inner Bushing



- Moving the control arm towards the centre of the car will give you more negative camber approx. 0.5 degrees;
- Moving the control arm towards the outside of the car will give you more positive camber approx. 0.5 degrees.

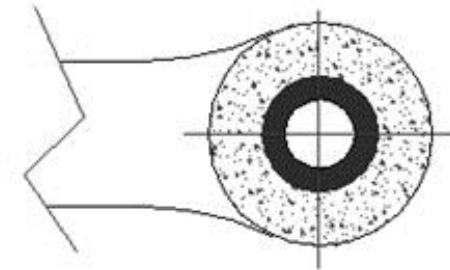


**Note:** Polyurethane bushings must be fitted to both sides of the vehicle.

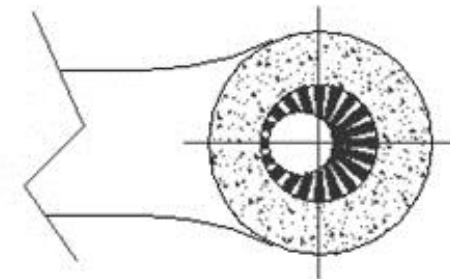
- Wheel-align the vehicle before the job is started and note settings;
- With the vehicle on jack stands and the wheels unsupported, remove the upper control arms;
- Remove the original bushes including the steel shell;
- Using the appropriate pressing tools support the control arm and press in the new bushes marked 3072, note a 14.5mm gap must be left between the steel shell flange and the control arm (as per O.E. bushes);
- Apply the white grease supplied to the bore of the bush and the steel crush tubes;
- With reference to the diagrams fit the crush tubes to gain desired results;
- Refit the control arms to the car, making sure you tighten the bolts with the arm held at 90 degrees to the mounts to give you the maximum camber offset;
- Re-assembly the rest of the car. Carry out a wheel alignment.

**Note:** manufactures torque setting must be used on all bolts and nuts.

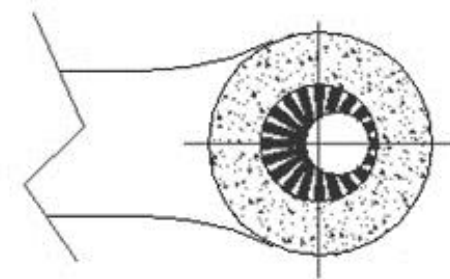
Left Hand side Shown



Standard Replacement



Camber Increase



Camber Decrease