

Fitting Instructions #5210XIS

Jeep Grand Cherokee WK2

Rear Upper Control Arm Inner Eye (Offset) Bushing Kit



Note: This instruction sheets is a suggested method of replacing the rear upper control arm inner bushes. This kit will replace both left and right control arms.

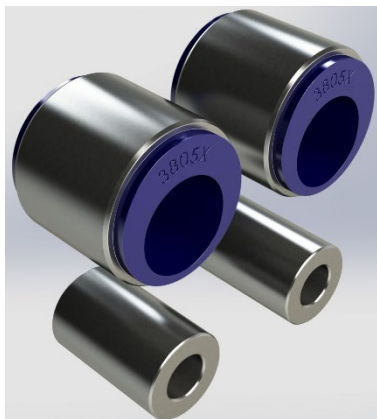
Alignment: This kit is designed to decrease negative camber on lowered vehicles. Expect 1.5°-2° change.

Contents:

- o SPF3805X x 2
- o SPF5210T x 2

Preparation:

- o Raise vehicle with a hoist for ease of installation; otherwise approved floor stands can be used.
- o Remove exhaust system up to engine header pipes.
- o Remove lower shock mount bolt. (Figure 01)
- o Place adjustable stand beneath cradle and loosen cradle bolts to allow cradle to drop down. (See Figure 02)
- o Remove cradle bolts gradually each side to loosen the coil springs.



Major Contents of Kit



Figure 01 – Left Rear Lower Wishbone Control Arm



Figure 02 – Cradle Bolts to be loosened.

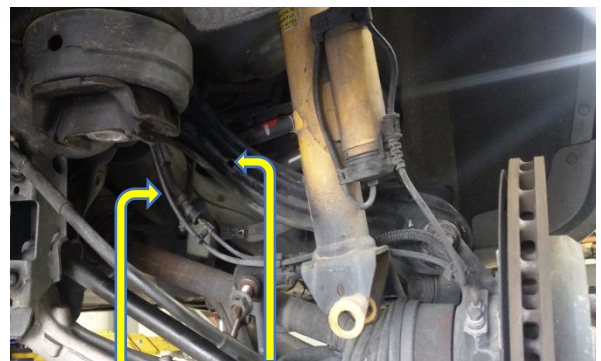


Figure 03- Wiring system to be freed from right rear upper control arm.

Fitting Instructions #5210XIS

Jeep Grand Cherokee WK2

Rear Upper Control Arm Inner Eye (Offset) Bushing Kit

Superpro
Suspension Parts

- Cut Zip-Ties holding wiring system to rear upper control arm. (See Figure 03/04)
- Undo rear upper control arm bolts to free control arm paying attention to the orientation of the arm and location of tapered crush tubes. (See Figure 04.)
- Remove old bushes with appropriate tools ensuring bores are not damaged in the process. (e.g. reciprocating saw or booker-rod setup or pressing tools)

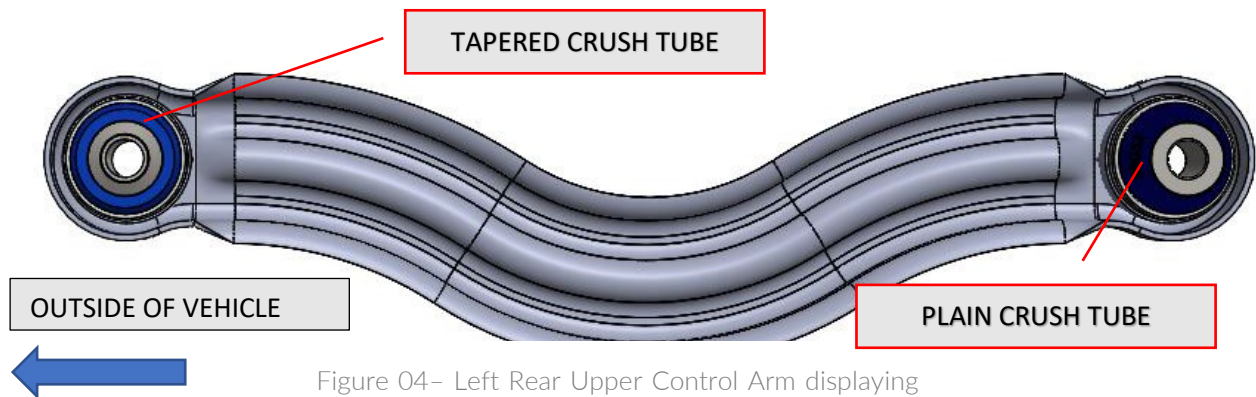


Figure 04- Left Rear Upper Control Arm displaying location and orientation of offset bush.

Installation:

- Ensure the mounting bores are clean of debris and burrs.
- Press new SuperPro Control Arm Bushes into eyes ensuring that the exterior steel shell sits approximately 6mm proud of the surrounding bore. (I.e. equally-spaced with the mounting bore.) **Note: Ensure orientation of bush is as seen above in Figure 04.**
- Apply supplied grease evenly to internal bore of supplied bushes and push the supplied crush tubes into the installed bushing in their respective locations. (See Figure 04)

Reassembly:

- Re-install rear upper control arms into vehicle, tighten bolts and re-attach wiring system.
- Place coil spring appropriately and raise cradle back into position.
- Fasten cradle bolts and re-torque all nuts to manufacturer's specifications. (85Nm for the bolt)
- Re-torque all bolts after 1000km.