

Fitting Instructions #4944IS

Jeep Grand Cherokee WK2

Front Upper Control Arm Interior Bush Kit

Notice: This instruction sheet is a suggested method of replacing the upper control arm interior bushes.

Contents:

- SPF4944 x 4
- SPF2730T x 4
- SPF0083W x 4

Preparation:

- Raise vehicle onto approved floor stands or by hoist.
- Remove upper ball joint nut and subsequently break its taper to separate the arm from the upright.

Note:

The nuts for the left hand upper control arm interior bushes are located inside the engine bay. Since the bolts are secured by locking tabs these nuts will have to be removed prior.

Subsequently, the right hand, upper control arm, interior bush, rear nut can be removed after firstly loosening the steering shaft to steering rack top unit joint bolt. After sliding down the shaft, remove the fasteners holding the heat shield and thus remove the heat shield. (See Figure 01 & 02.)

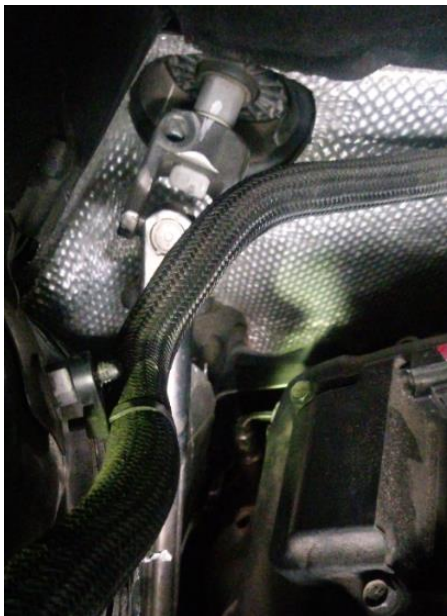


Figure 01 - Steering Shaft to Steering Rack Top Unit prior to

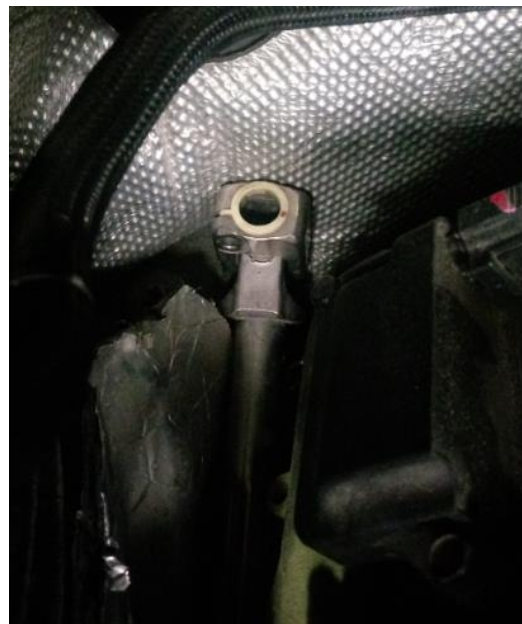


Figure 02 - Steering Shaft to Steering Rack Top Unit after

Fitting Instructions #4944IS

Jeep Grand Cherokee WK2

Front Upper Control Arm Interior Bush Kit

To remove the right hand control arm interior front nut, part of the interior guard clips (level with the upper control arm) is to be removed. Thus, you can remove the control arm nut as the bolt similarly is fixed by a locking tab.

Installation:

- o Remove old bushes with press **PAYING ATTENTION TO NOT COLLAPSE THE ARM.** To avoid collapsing the arm, use spacer(s) whilst pressing the old bushes out and new bushes in. (See Figure 03.)
- o Once old bushing is removed press SPF4944 bushing into arm as shown in Figure 03 & 04.



Figure 03 - Spacer utilised in installing SPF4944 Polyurethane



Figure 04 - Pressed SPF4944 Polyurethane Bushing

Reassembly:

- o Refit control arms ensuring the supplied washers are installed to the outside of the arms.



- o Refit heat shield, steering rack and re-torque all nuts and bolts to manufacturer's specifications. (95Nm for Bolt/Nut)
- o Wheel align the vehicle and re-tighten all bolts after 1000km.