

Fitting Instructions #4303IS

BMW 1 SERIES F20 / BMW 3 SERIES F30

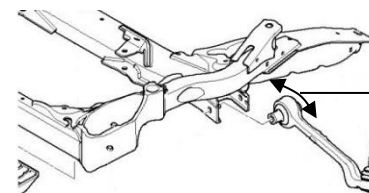
Control Arm Lower Inner Bushing (Front)



Note: Polyurethane bushes must be fitted to both sides of the vehicle.

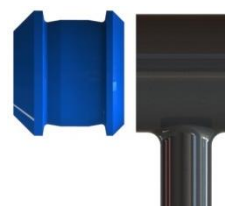
- Jack the vehicle up and support on stands/hoist.
- Mark left and right arm and then remove the control arms from the vehicle.
- Remove original shell part from the lower control arms with the use of a hydraulic press and suitable pressing tools.
- Clean housing areas to remove any old original bushing materials before installing new bushes. Apply the grease supplied to the housing and the outside of the bush, then push the new bushes (marked 4303) into the housing (refer to figure 1).
- Install the hex side of the crush tube to the shorter side of the bushing flange (refer to figure 1). Using the grease supplied, generously lubricate the outside of the steel crush tube, the bore of the new bush and then, push the crush tube in.
- With reference to Table 1, the kit number that you have purchased and the settings required, adjust the new crush tube with the spanner provided, so that the hole in the bushing is positioned to give the desired camber result.
- Tighten all bolts ensuring that you use manufacturers torque settings, wheel align vehicle and check new settings.

To Front of Vehicle

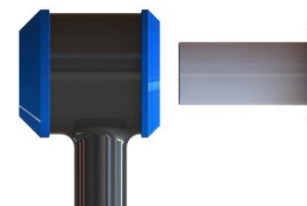


Left Hand Side Shown

By adjusting the offset crush tube, camber variation can be achieved.



(a)



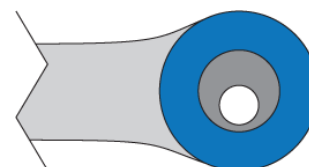
(b)



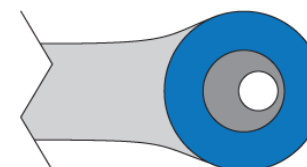
(c)

Figure 1: SuperPro Polyurethane Bushes and Crush Tube assembly in Arm (Left hand Arm Shown)

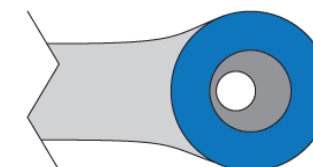
Left Hand Side Shown



STANDARD REPLACEMENT



- CAMBER INCREASE



+ CAMBER INCREASE

Table 1: Illustration of Camber settings