

Fitting Instructions #5513IS

Pajero Sport

Trailing Arm to Diff Mount Kit Standard Replacement



Note: Polyurethane bushings must be fitted to both sides of the vehicle. This kit should be installed by a Qualified Motor Mechanic.

- Removal of the trailing arms can be performed with the vehicle at ride height and on the ground as long as only one trailing arm is removed at a time and a bottle jack is used to stop the differential from twisting;
- Remove arm from vehicle ensuring to disconnect abs and handbrake lines from vehicle;
- Press the original bushings from the arm and discard;
- Deburr the housings as necessary;
- Press bushings into arm so the bushing face extends past the arm the same distance on both sides as seen in Figure 2 below;
- For reassembly it is recommended that you bolt the arm to the diff then raise the rear of the arm up to the chassis and bolt in place, tightened up at ride height;
- Repeat disassembly and bush fit up procedure to the other arm;
- Wheel align vehicle and note settings;
- Re tension all bolts at 1000km check;

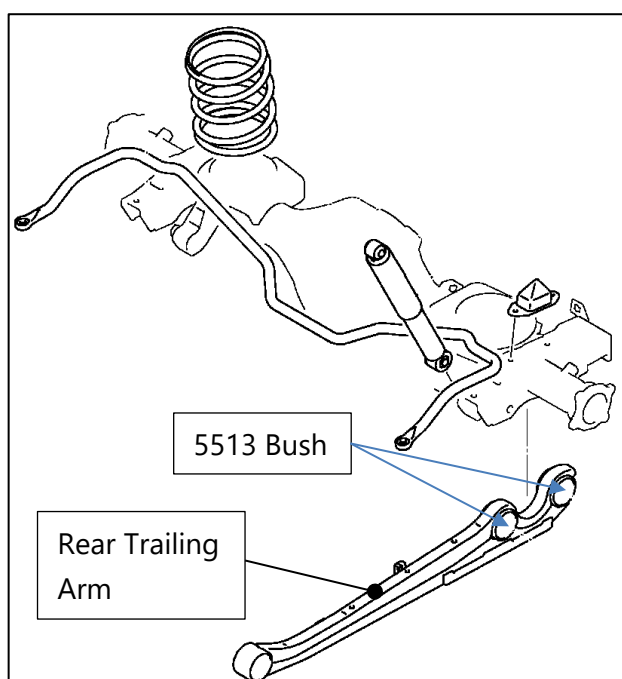


FIG 1

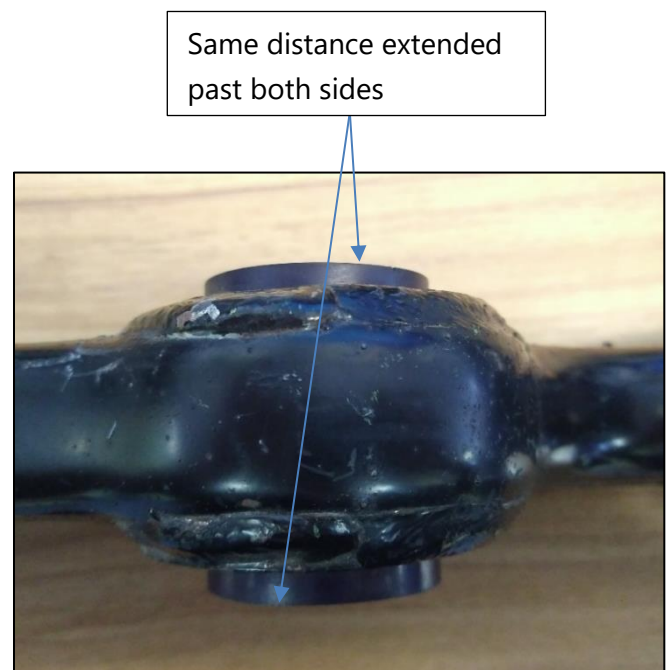


FIG 2