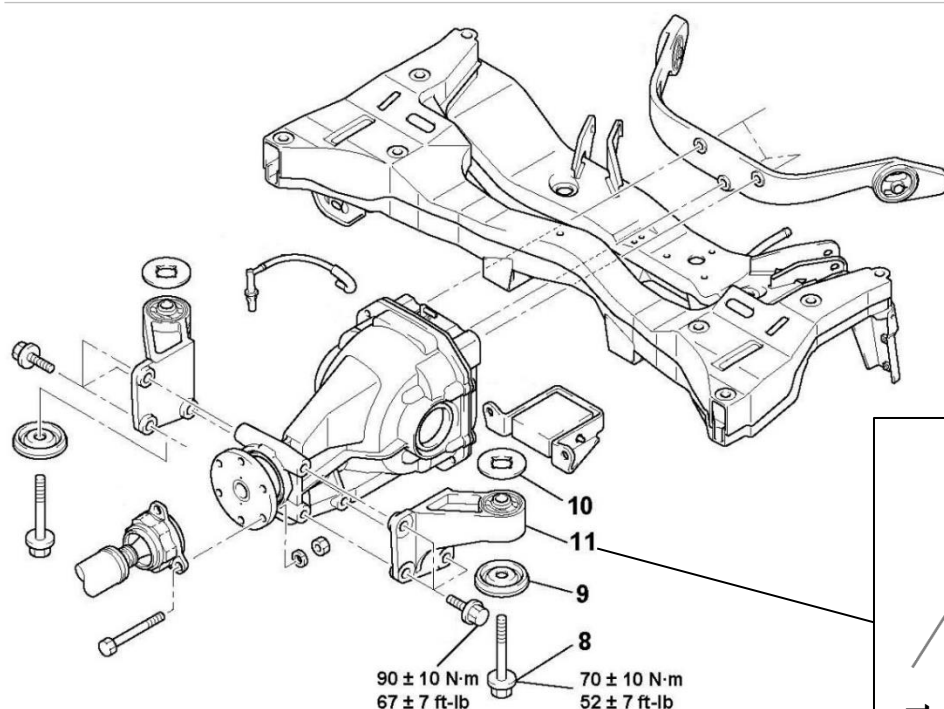


# Fitting Instructions #3116IS

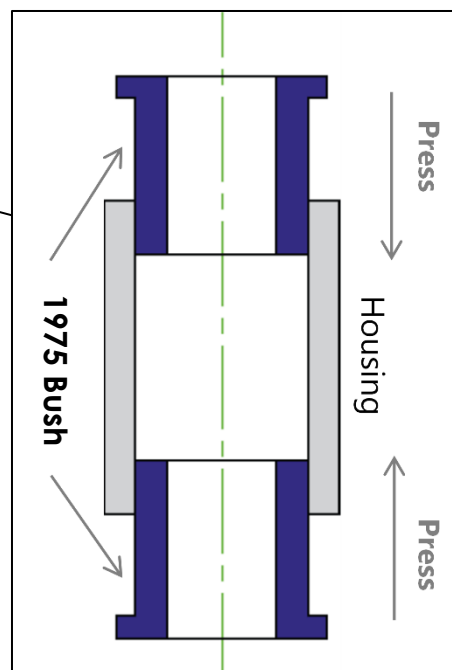
## Mitsubishi Outlander 2003-2006, ZE, ZF

### Differential Pinion Housing Mount Bush kit



**Figure 1:** Rear Diff Exploded View

KIT CONTENT		
Part Number	Description	QTY
SPF1975	PU BUSH	4
SPF3116T	TUBE 22.22 X 14.3 X 56mm	2
NG-10	WHITE GREASE	1
3116IS	INSTRUCTION SHEET	1



**Figure 2:** Bush Installation Guide

**Note:** It is recommended that the rear Differential Support Bracket Mount bushes be replaced with SPF2544K

- With the vehicle on a hoist, remove the differential mount bracket (item number 11) from the vehicle.
- Remove original bushings including the steel shell from the housing with the use of a hydraulic press and suitable pressing tools.
- Clean housing areas to remove any old original bushing materials ensuring the bores are smooth and free of burrs.
- Grease the bore of the housing and using Figure 2 above as a guide insert "1975" bushing into the housing.
- Grease the bore of the bush, the outside of the steel crush tube and press the crush tube into the bush. An arbour press may be required to insert the steel crush tube.
- Offer the assembly back into the differential, **reuse the OE washers** to the upper and lower position.
- Ensure that all fasteners are torqued to manufacturer's specification.