

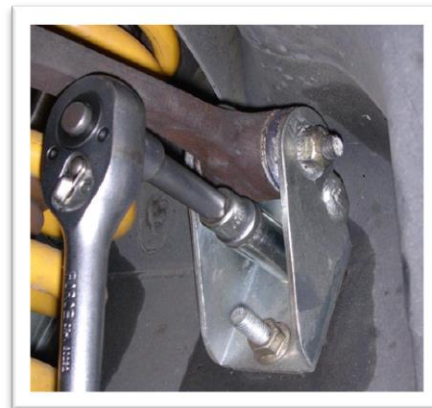
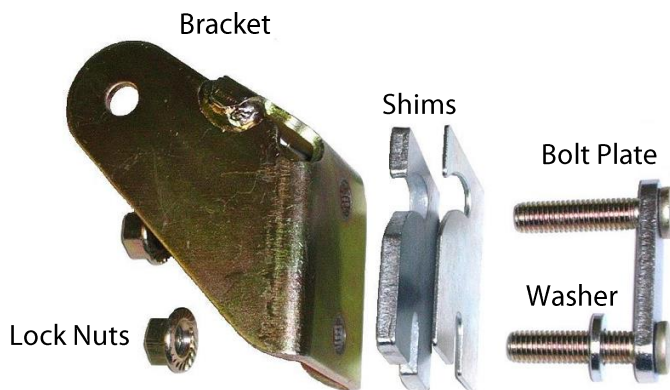
Fitting Instructions #1600V8IS

Ford Falcon

Camber Caster Adjusting Kit

#1600V8K & #1600SLV8K

This kit has evolved for use in V8, and V6 turbo powered cars where access to the inner pivot retaining nuts is limited from within the engine bay. By captivating the bolts in a mounting plate the retaining nuts can be located in and tightened from under the wheel arch.



Check kit for contents:

- | | |
|-----------------------|--------------------------|
| 3 x 6mm Thick Shims | 2 x Replacement Brackets |
| 2 x 3mm Thick Shims | 2 x Bolt Plates |
| 4 x 1.6mm Thick Shims | 4 x Hex Lock Nuts |
| 2 x Washers | |

Step 1: The vehicle wheel-alignment settings should be checked before fitting this adjustment kit so correct settings can quickly and easily be obtained.

Step 2: Raise the vehicle, and remove the original upper pivots.

Special Note: Some XR6 and XR8 vehicles may have factory-modified inner pivot brackets fitted standard and only require shims to adjust the alignment settings.

Step 3: Fit the new brackets to the control arm, but do not tighten the pivot bolts at this stage. The bolt plates are inserted from the engine bay with a supplied washer on the lower bolt. After deciding to increase or decrease the amount of caster or camber, fit the required shim stacks supplied to the front and/or rear brackets. Re-assemble the control arm to the chassis, making sure the shims are located correctly. Tighten the inner four mounting nuts to 35Nm. Replace the wheels, lower the vehicle, and tighten the two inner pivot bolts to 35Nm.

Note: Tighten the two inner pivot bolts with the vehicle at finished ride height.

Wheel-alignment must be performed on the vehicle after the kit is fitted.

Recommended settings:

	Sports Lowered suspension	Standard Suspension
Camber	$-1.0^{\circ} \pm 0.3^{\circ}$	$-0.5^{\circ} \pm 0.3^{\circ}$
Caster	$+7.0^{\circ} \pm 0.4^{\circ}$	$+6.8^{\circ} \pm 0.4^{\circ}$
Toe	Total in 1mm \pm 0.5mm	Total in 1mm \pm 0.5mm

Note Caster spread of up to $\frac{3}{4}$ of a degree lower on the driver's side of the vehicle to compensate for road camber is recommended.

#1600K – Designed to allow a greater range of adjustment to a standard height vehicle.

The Super Pro Replacement bracket kit with a shim stack of 1 x 6mm, 1 x 3mm & 1 x 1.6mm shims fitted to the front and to the rear brackets is the approx. dimensions of the original brackets removed from the vehicle. Therefore this shim setting will give the same settings as checked before commencing the adjustments.

#1600SLK – Specifically designed to correct negative camber problems, which are created by lowering vehicles.

Camber Change

A shim stack of 9mm fitted or removed from the front and rear bracket together changes the camber approx. 1 degree.

Caster / Camber Change

A shim stack of 6mm fitted or removed to the Front bracket only. Changes the caster approx.

1 degree and also changes the camber approx. 0.3 degree.

A shim stack of 6mm fitted or removed to the Rear bracket only. Changes the caster approx.

0.5 degree and also changes the camber approx. 0.5 degree.

Special Note: Some XR6 and XR8 vehicles may have factory modified inner pivot brackets fitted standard and only require shims to adjust the alignment settings.

Extra shims are available in packs of 10.

The following sizes are available:

1.6mm Thick

3.0mm Thick

6mm Thick

Part #1600-1.6K

Part #1600-3K

Part #1600-6K

