

Fitting Instructions #5220IS

Mazda CX9

Rear Differential Mount Bushing replacement

Superpro
Suspension Parts

REV A



Original bushes

Note: It is possible to remove and replace these bushes without removing sub frame

1. Jack vehicle and put on stands or support on hoist
2. Remove the spare wheel to help with access to the area
3. Support the differential and remove the nuts attaching the diff support bracket to the bushes.
4. Remove the mounting bracket that bolts to the top of the differential to gain access for removing the bushes
5. Remove the bush using suitable extraction tools or cut out with a reciprocating saw and or Cold Chisel.
6. Care must be taken to not damage the sub frame.
7. Clean up housing area
8. Using the diagrams as a reference assemble suitable sleeves, receivers threaded rod and washers and pull the new bush into place.
9. Note on the bushing there is a part number stamped in "5220" this must face the front of the car and the snubber part of the bush face the rear.
10. Pull the bush into place so the outer shell sits level with the inside or front face of the cross member as shown
11. Refit the differential mounting bracket, bolts, centre stud washers and nuts
12. Refit spare wheel.

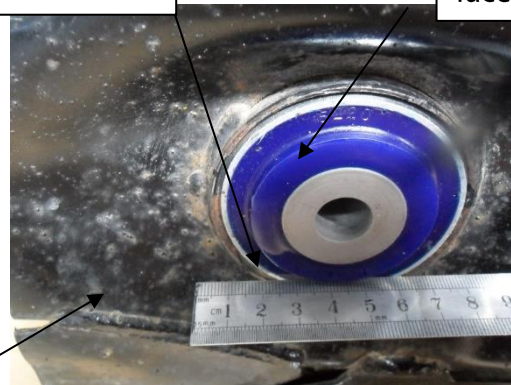
Fitting Instructions #5220IS

Clean up housing bore ensuring there are no burrs



Note the outer shell of the bush should sit level with the cross member

Note: part number "5220" should face the front of the car as below



Sub frame

View of installed bush looking from the FRONT of the vehicle



Snubber

View of installed bushes from the REAR of vehicle note the snubber needs to face the rear of the vehicle