

Fitting Instructions #4650IS

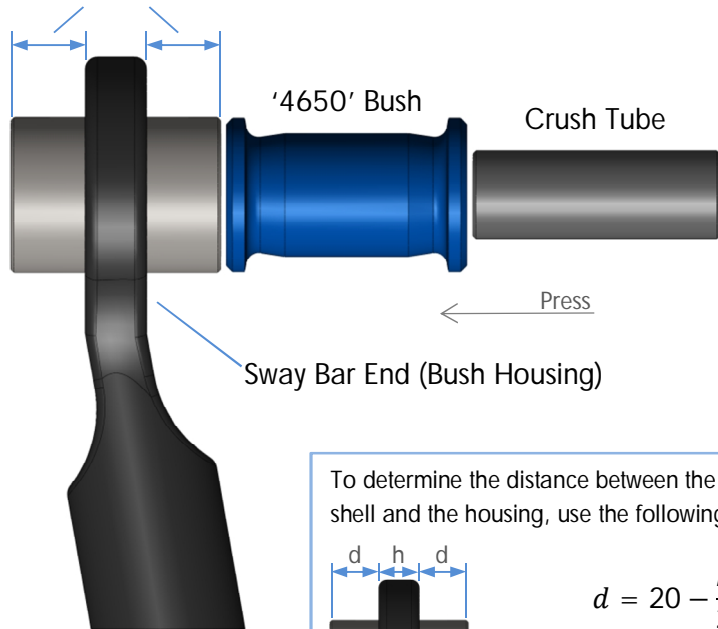
Chevrolet Corvette

Front Sway Bar Link Bushing

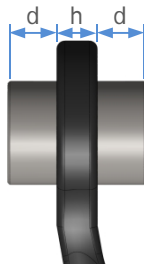


- With the vehicle on jack stands/hoist, remove the sway bar;
- Remove the original link bushes from the sway bar and push in the new SuperPro '4650' bushes. Make sure both edges of the shell are equally spaced from the housing, as shown in the illustration below;
- Refit the sway bar and tighten all the bolts to the manufacturer's torque settings.

Both sides are equally spaced from the housing



To determine the distance between the edge of the shell and the housing, use the following equation:



$$d = 20 - \frac{h}{2}$$

Where:

d = distance from the edge of the shell to the surface of the housing (mm);

h = housing thickness (mm).

Fitting Instructions #4650IS

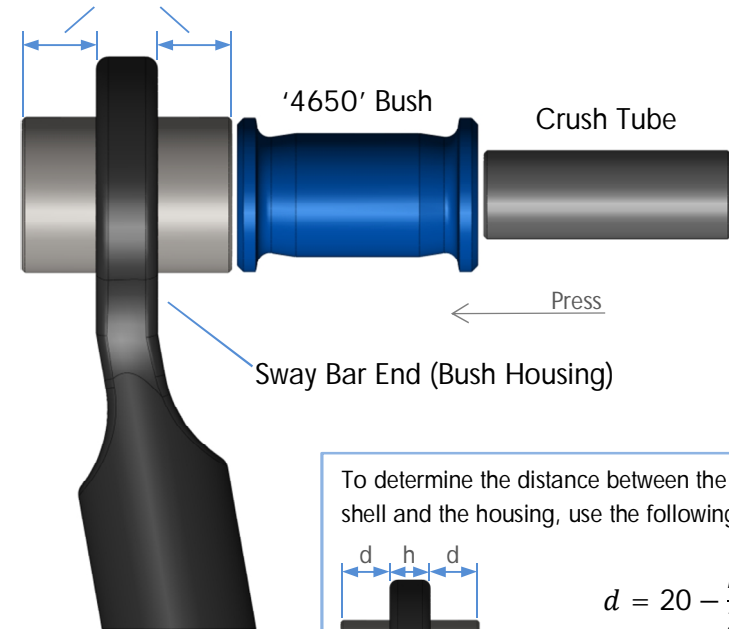
Chevrolet Corvette

Front Sway Bar Link Bushing

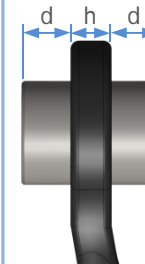


- With the vehicle on jack stands/hoist, remove the sway bar;
- Remove the original link bushes from the sway bar and push in the new SuperPro '4650' bushes. Make sure both edges of the shell are equally spaced from the housing, as shown in the illustration below;
- Refit the sway bar and tighten all the bolts to the manufacturer's torque settings.

Both sides are equally spaced from the housing



To determine the distance between the edge of the shell and the housing, use the following equation:



$$d = 20 - \frac{h}{2}$$

Where:

d = distance from the edge of the shell to the surface of the housing (mm);

h = housing thickness (mm).