

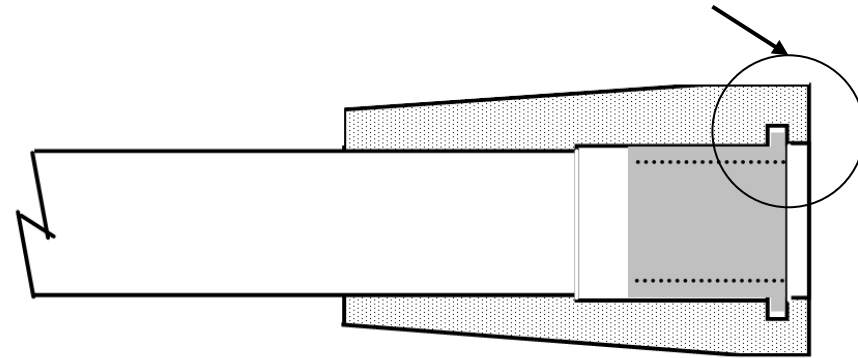
# Fitting Instructions #0926IS

Holden Commodore / Nissan Pintara, Pulsar, Skyline, Sunny

## Steering Rack & Pinion Shaft Guide Bush Kit



Drawing showing lug on new bush installed into the housing to locate bush correctly.



- With the rack removed from the vehicle, place the rack in a vice, remove the boots from the main housing and then remove the rack end from the LHS of the shaft (In some applications you may have to use a drill bit 3.2mm Dai and a drill to drill-out the lock pin between the lock nut and the rack end ball housing);

**Caution:** When removing Rack end from shaft, use an adjustable wrench on the flat teeth area on the RHS of the shaft to prevent the shaft from rotating and damaging the yoke and pinion teeth.

- Wind the shaft fully in through the bush, so the main shaft is withdrawn inside the LHS bush;
- Insert a flat blade screwdriver between the bush and the housing and pry the bush away from the housing toward the center;
- With the screwdriver in position, wind the rack back to the center position. The rack shaft should have pushed the original bush out of the housing;
- With the rack shaft fully extended, inspect the shaft for damage or wear and replace as necessary. Clean shaft and housing then smear grease onto the shaft;
- Wind the shaft fully in, smear grease on to the new bush and install the bush into the housing;

**Note:** Make sure that the 3 locating lugs on the new bush are protruding out into the matching grooves in the housing to lock the bush in position. See drawing below.

- Wind the shaft through travel and check operation of the rack, adjust yoke pre-loads and bearing pre-loads as necessary;
- Fit rack end to shaft and adjust the rack end pre-load so that the rod will move when a load of 1.8-3.7kg is applied with a spring balance at 200mm from the centerline of the rack end ball. Lock the rack end ball housing and lock nut;
- Re-drill a new lock pin hole and install the new pin.

**Note:** the new hole in the lock nut and housing should be within 90 degrees of the original.

- Fit boots, inserting small amount of grease to lubricate the rack;
- Use zip ties to retain the boots to the housing.