

Fitting Instructions #5115IS

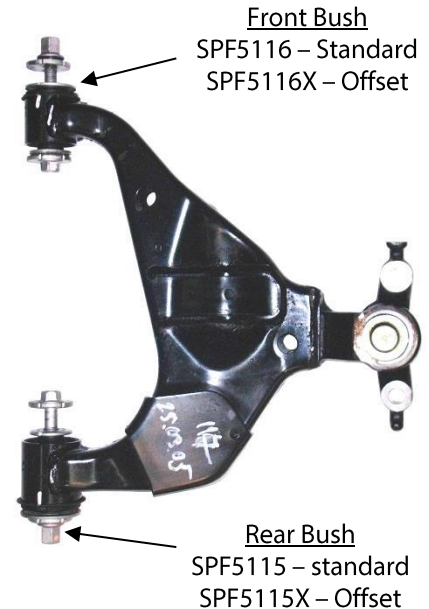
Toyota Land Cruiser Prado 150 Series

Front Lower Control Arm Bushes All

- Wheel align the vehicle before the job has started and check the camber/caster readings;
- Jack vehicle up on hoist/stands;
- Remove front lower control arms;
- Use a 20mm drill bit, drill through the washers to remove them from the crush tube;
- If using an oxy-acetylene torch you must be in a well ventilated area and use the appropriate safety equipment;
- Use the oxy-acetylene torch to heat the inner crush tubes until the bonding on the rubber has let go – push the crush tube out. Apply heat to the outside diameter of control arm until the rubber bonding lets go of the shell then push the remaining rubber out;
- Using a hacksaw or similar cut through the remaining shell then use a chisel to remove the shell from the control arm. Clean out the holes in the control arm and paint the eyes if they need to be;
- Using a hydraulic press and appropriate pressing tools press the new bush in making sure to fit the offset to the settings you require. The flanges are marked FRONT and REAR and fit in the same way as the original bushes.

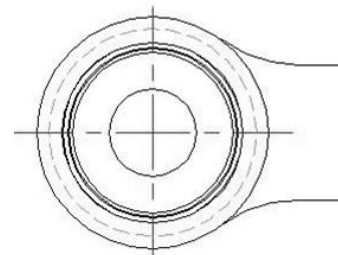
Note: use a plate disc and press on the end of the urethane part of the bush as per photos and sketches over page.

- Refit the control arms and carry out a front wheel alignment;
- Recheck all bolts after 1000km or 1 month;
- Manufactures torque setting must be used on all bolts.



View from Rear of

Standard



Negative Camber
Increased for Raised
Vehicles

