

Fitting Instructions #3148PIS

Ford Territory / Falcon BA, BF & FG

Rear Differential Bushing

Note: This instruction sheet is a suggested method of removing the diff bushes. There are various techniques and tools available to do the job. Manufacture's torque settings should be used to tension all bolts.

- Remove the rear seat base, disconnect the wheel speed sensors and push out from rubber bung;
 - Set the car up on a hoist and remove the rear wheels, remove the rear brake calliper mounting bolts and secure calliper out of the way;
 - Remove rubber exhaust hangers;
 - Mark the tail-shaft position and counterweights, and disconnect the shaft;
 - Disconnect the handbrake cables from the 'T' junction;
 - Remove the 2 stabilizer rod bolts from the chassis rails, also remove the side bolt from the right side of the rear diff bush housing near the wheel well;
 - Support lower control arm and remove the lower shock absorber bolt, also remove the 2 front blade control arm nuts, lower down until blade control arm is clear from the studs. Be careful of spring tension;
 - Lower the car and support the cradle with 3 or more jack stands or similar, then remove the 6 sub-frame nuts/bolts;
 - Slowly raise the vehicle making sure no wires brake lines, shock absorbers, etc., are damaged;
- Separate and lower rear end from vehicle, Figure 1 ;
 - Remove diff vibration absorber;
 - Use screwdriver or chisel to crush the outer shell and remove bush. Force may be needed to be applied to the other side of the bush to remove it;
 - Fit new bush. Ensure that bush is kept square to the mounting surface. All thread and washers and spacers may aid the process;
 - See Following Pages for outrigger bush replacement instructions;
 - Reassemble the vehicle in reverse order.



Figure 1 - Back end removed from vehicle

Fitting Instructions #3148PIS

Diff outrigger arm bushes

- Remove exhaust heat shield and remove both outrigger bolts;
- Undo the three side bolts of the diff arms and lever diff to remove arms;
- Use a hacksaw or similar to cut through the nylon shell, and then chisel the shell out or use a pair of vice grips to remove or use a screwdriver, as shown in Figure 2, to fold the shell and remove;
- Clean any burrs that may have happened;
- Using the stepped down parallel spigot on the outer shell as a guide, use an all-thread and appropriate washers/bearings, Figure 3, to draw the bush in until it is 5 – 7mm recessed into cradle;
- Refit the outrigger arms to the diff then fit the new washers over the existing bolts, Please note that the concave side of the washer should be facing outwards, Figure 5;
- Reverse disassembly procedure to reinstall.

Note: Make sure there is clearance between the outriggers and the cradle; Make sure there is clearance between the fuel tank and the LH outrigger bolt.



Figure 2 – Removal of differential outrigger bush



Figure 3 – Insertion of new outrigger bush

Note: The “5090P” polyurethane bush should face towards the front of the car when installed.

Note that the smaller diameter should face towards the back of the car.

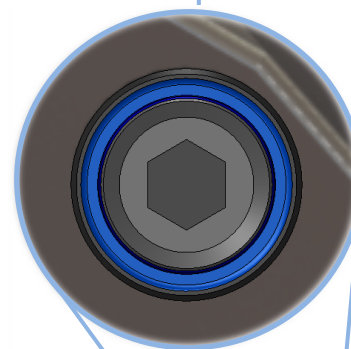


Figure 4 – '3148PE' Bush Assembly

The cup washer concave side should be facing outwards in relation to the bush.



Figure 5 – '3148PE' Bush Assembly

