

# Fitting Instructions #5342IS

## Mitsubishi 380

### *Rear Trailing Arm Front Bushing Replacement Kit*

**NOTE:** Bushes must be fitted to both sides.

- Jack the vehicle up and support on jack stands;
- Remove the trailing arms;
- Remove original shell/bush part from the housing with the use of a hydraulic press and suitable pressing tools;
- Apply the supplied grease to the inside of the eye and press the bushing in shown in figure 01 (Note: A large washer with a bolt going through the centre of the bush keeps the bush centred);
- Next apply the supplied grease to the inside of the bush and press the crush tube into the bush;
- Refit the control arm to the vehicle. Tighten all bolts to manufactures torque settings;
- Repeat for the other arm.



Figure 01



Figure 02

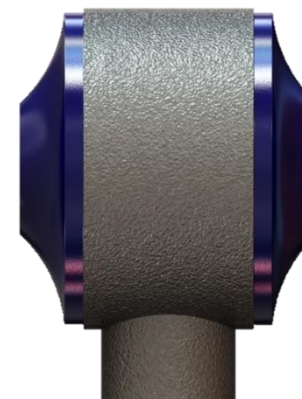


Figure 03