

Fitting Instructions #TRC9012IS

Toyota Hilux 2015-On – GGN, GUN 4WD

Chassis Brace Drop Spacer Kit (Front)

Suitable for Hilux 2015-On. De-signed to allow for the front Chassis Brace to be lowered by 20mm, thus providing clearance for the front Swaybar when fitted with Swaybar Relocation Kit and/or F4R Shock.

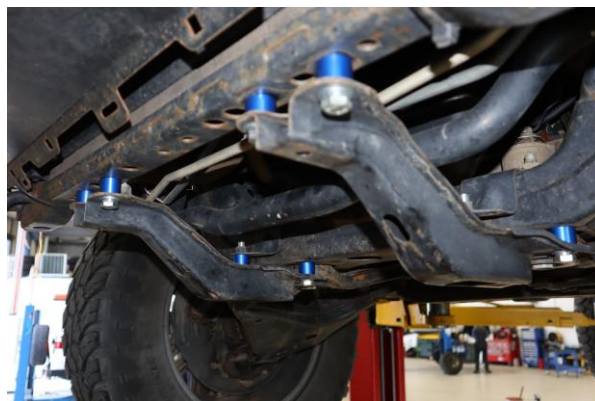


Kit Contents –

10 x M10 x P1.25 x 45L Bolt;
10 x M10 Spring Washer;
10 x M10 Flat Washer;
10 x 18mm Machined Alloy Spacer.



Shows Spacers Installed – view from front of vehicle looking under driver side.



Shows Spacers Installed – view from front of vehicle looking under passenger side.

****SuperPro recommends all work is carried out by qualified mechanic****

1. Secure vehicle and ensure hand brake applied.
2. Remove front bash plate from vehicle.
3. Remove both front facing chassis braces that run from cross member to radiator support.
4. Reinstall front braces now with supplied spacer and new hardware as demonstrated.
5. Reinstall bash plate.

