

Fitting Instructions #RC0014RZIS

Nissan GT-R R35

Rear Sway Bar Stabiliser Kit

Fitting of this bar should be carried out by qualified persons only.

- Jack the vehicle up and place on support stands.
- Support the protection cover and remove the bolts first, and then detach the cover from the car, Figure 01;

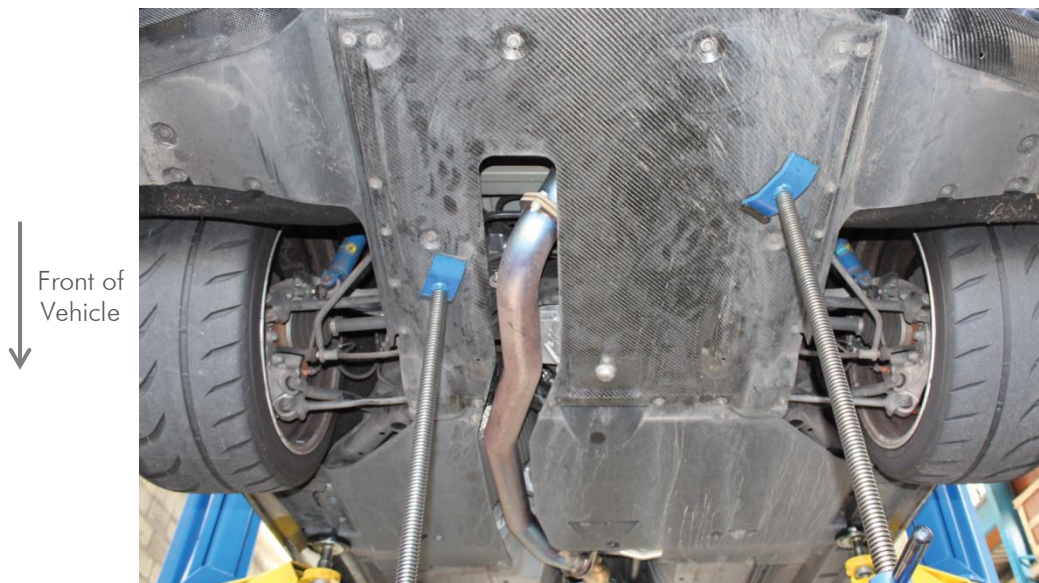


Figure 01 – Support the protection cover

- Unbolt the original sway bar link brackets, as shown in the Figure 02, then remove the sway bar brackets, Figure 03;

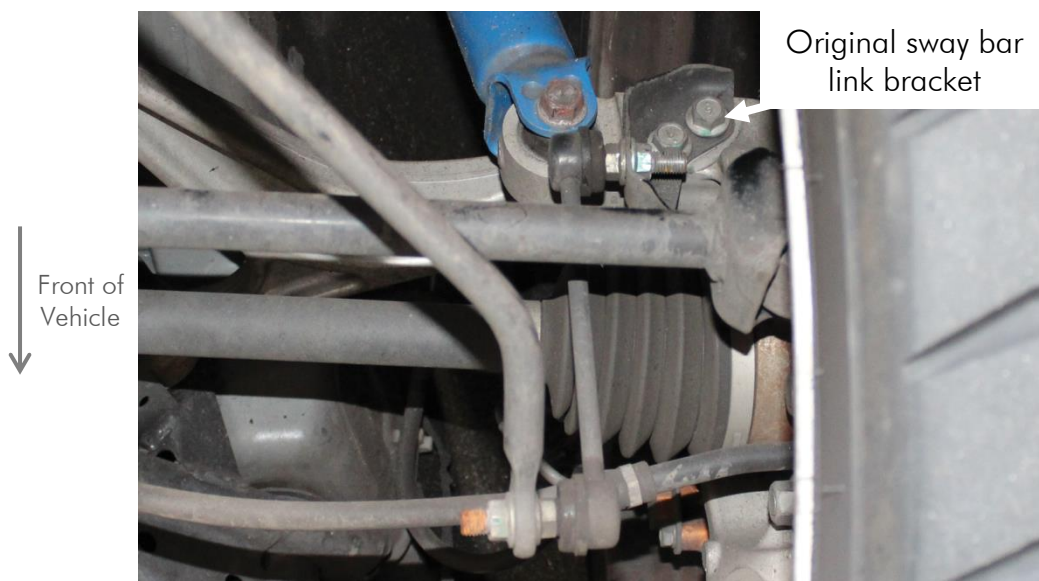


Figure 02 – Original sway bar link. Right hand side view

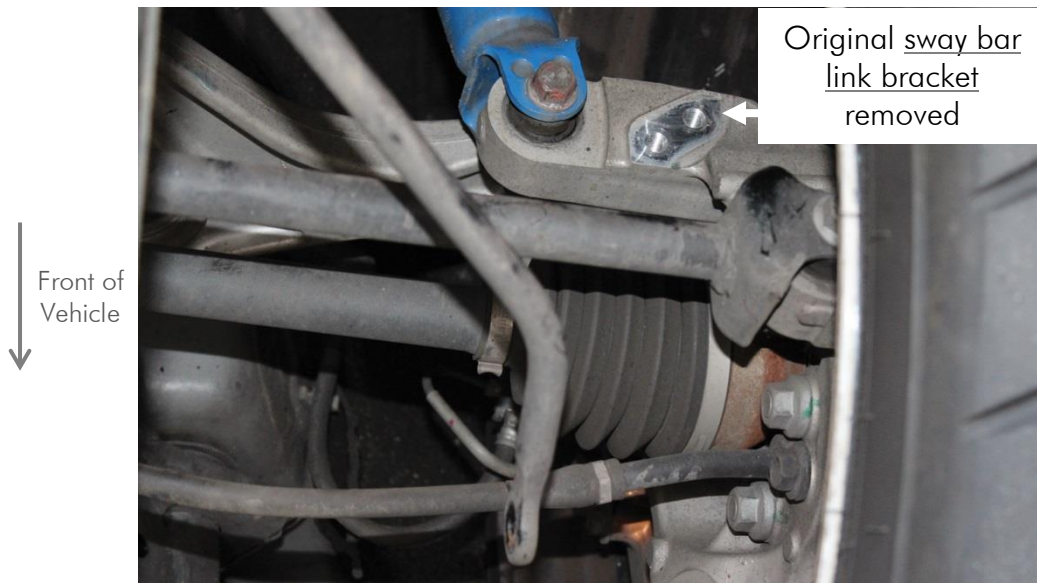


Figure 03 – Original sway bar link removed. Right hand side view

- o Unbolt and remove the original sway bar brackets to be able to remove the sway bar completely, see Figure 04;

Note: it is not needed to remove the exhaust; the sway bar can be removed by passing it over the exhaust pipe.



Figure 04 – Original sway bar and bracket. Left hand side view

- Lubricate the new SuperPro bushing with the grease supplied and fit it to the new RC0014RZ sway bar, then, using the original bracket, install the sway bar to the vehicle, as shown in the Figure 05;

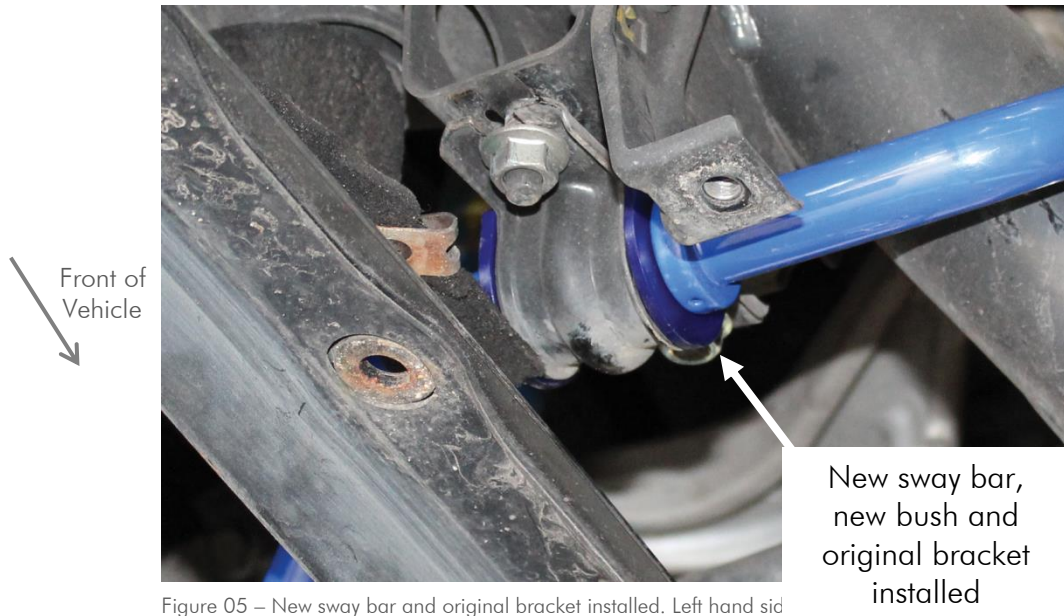


Figure 05 – New sway bar and original bracket installed. Left hand side

- Pre-adjust the length of the links by comparing to the original, Figure 06;



Figure 06 – New sway bar link length comparison

- Install the links on the sway bar by selection the desired setting, see Figure 07;

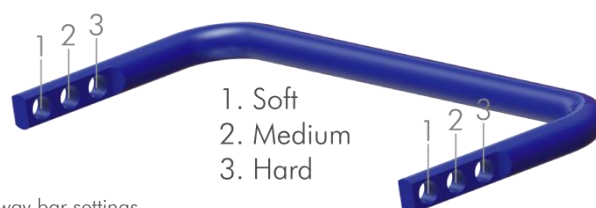


Figure 07 – Sway bar settings

- Install the original link bracket and the new link on the hub, as shown in the Figure 08;



Figure 08 – New sway bar link installed on the original link bracket attached to the hub. Right hand side view

- Check and, if necessary, adjust the sway bar links again, and tighten the nut to lock the desired length, Figure 09;

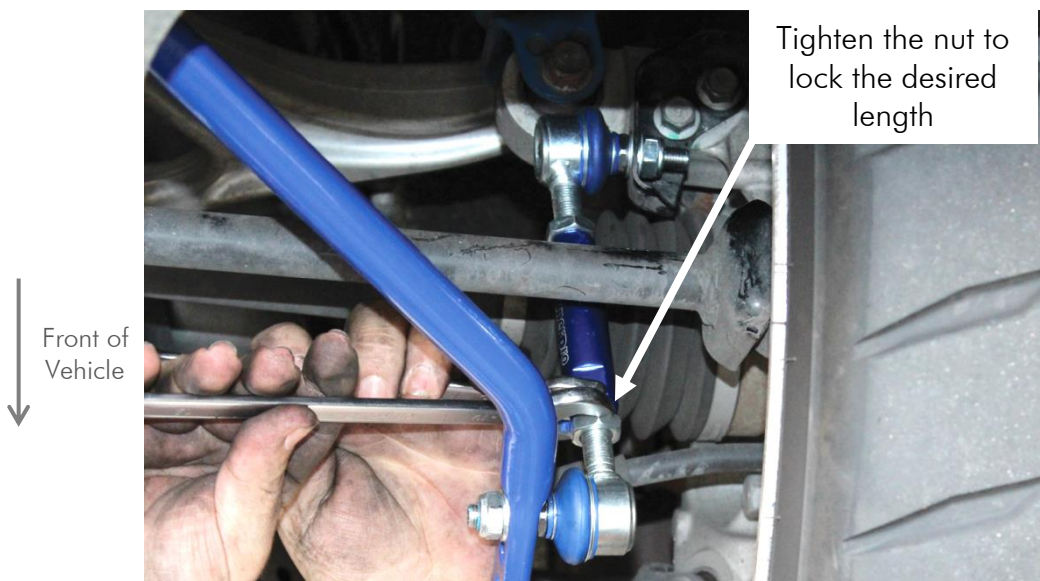


Figure 09 – New sway bar link installed. Right hand side view

- Install the protection covers back.