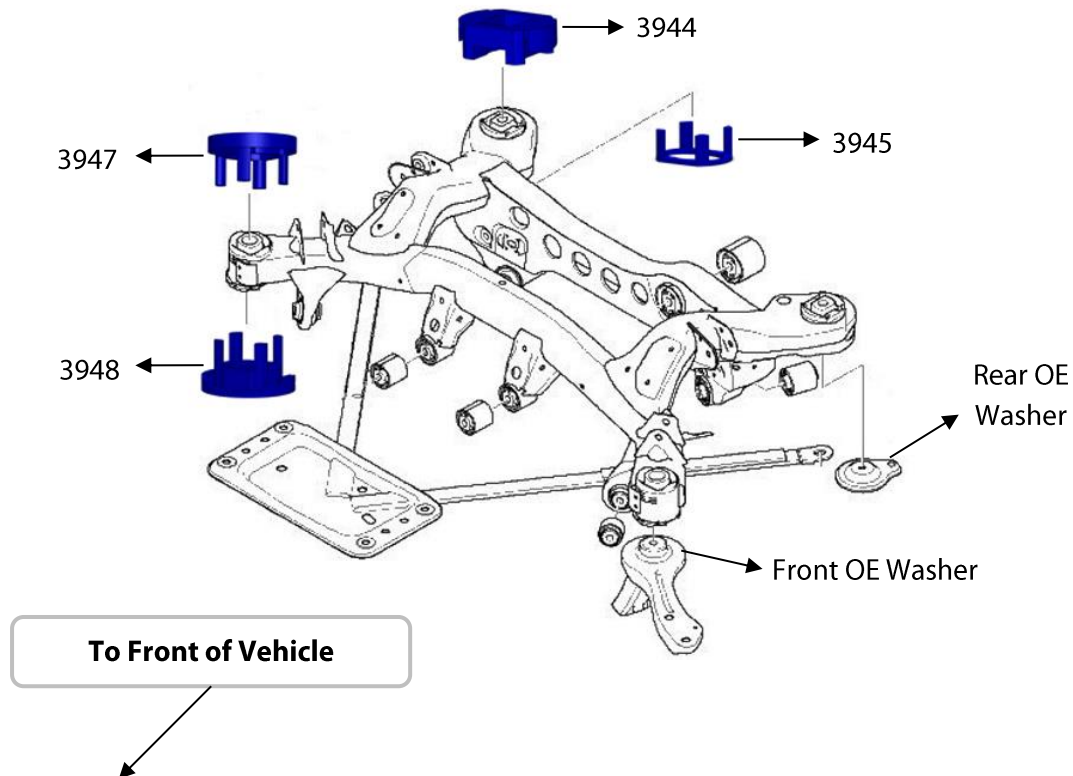


Fitting Instructions #3944IS

BMW 1 SERIES E81

Rear Subframe Bushes insert



- Jack vehicle up and put on stands/hoist;
- Lower the rear subframe by removing the front and rear washer bolt and support with long adjustable jack stand, one on each side of the subframe;

Note: be cautious with the brake lines so that they are not stretched.

- Grease up the legs of all bushes and with reference to the diagram below, locate 3944 to the upper and 3945 to the lower for the rear subframe mount. For the front subframe mount, locate 3947 to the upper and 3948 to the lower;

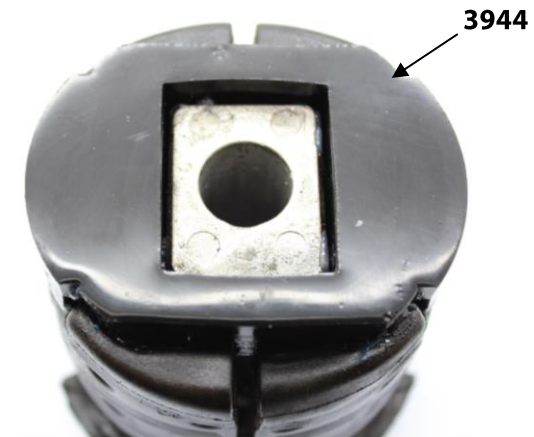
Note: The subframe inserts will be tight to fit in. Use a soft hammer to aid pushing inserts to position if required.

- Raise the subframe, refit and tighten all washers and bolts to the vehicle. The inserts should fit itself to the OE bush as you tighten the bolts. Ensure that you use manufacturers torque settings and carry out a wheel alignment.

Fitting Instructions #3944IS

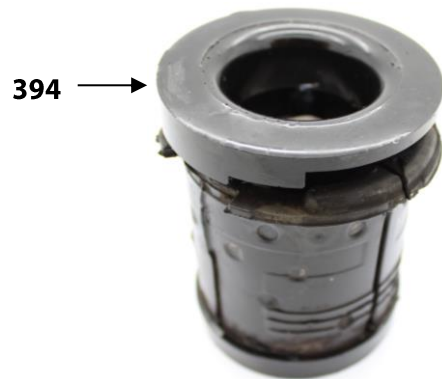


↑
To Front
of
Vehicle

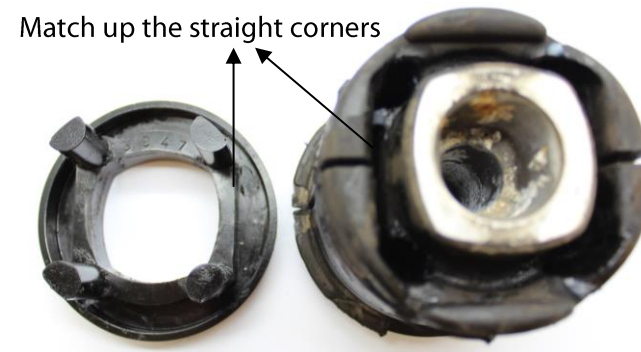


Rear lower subframe insert – note the shape of the polyurethane insert and match it up to the shape of the pin and push it in.

Rear upper subframe insert - note the shape of the polyurethane insert and match it up to the shape of the pin and push it in.



←
To Front of
Vehicle



Front lower subframe insert – note the shape of the polyurethane insert and match it up to the pattern of the factory bush.

Front upper subframe insert – note the shape of the polyurethane insert and match it up to the pattern of the factory bush.