

Fitting Instructions #2960IS

Ford Falcon, Mondeo, Cougar

Control Arm Upper Inner Kit

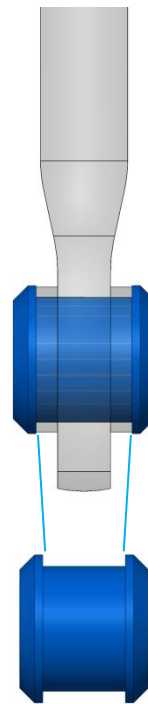


- This kit requires the use of the original equipment steel shell (lower bush), do not remove it. The rubber part must be removed by the following procedure:

Note: this procedure must be carried out in a well-ventilated area.

- To remove the lower OE bush:
 - Use an oxy-acetylene torch to warm the inner tube, to destroy the rubber bond and remove the tube;
 - Next, heat the outer shell to destroy the bond between the outer shell and the rubber bush. Remove the rubber bush;
 - Further heating can be used to clean any remaining rubber from inside the shell. Use a wire brush and emery paper to clean the shell;
 - Using the grease supplied, grease inside the shell, outside and inside of the bush and outside of the tube;
 - Press the bush '2381' into the shell, and then insert the tube into it, see diagrams.
- The upper bushes marked '2960' must be installed as shown in the diagrams, please note the orientation of the bushes and OE washers.

Note: All surfaces of bushing that contact metal should be greased. Diagram may not represent your exact bushes.



Note: The bush is made slightly shorter in length than the housing, but the bush stretches once it is installed.

