

Fitting Instructions #3227IS

Ford Falcon AU,BA,BF & FG Series

Caster & Camber Adjuster Kit on



#3227K – Designed to allow a greater range of adjustment to a standard height vehicle.

The Super Pro Replacement bracket kit with a shim stack of 1 x 6mm, 1 x 3mm & 1 x 1.6mm shims fitted to the front and to the rear brackets is the approx. dimensions of the original brackets removed from the vehicle. Therefore this shim setting will give the same settings as checked before commencing the adjustments.

- *Step 1* - The vehicle wheel-alignment settings should be checked before fitting this adjustment kit so correct settings can quickly and easily be obtained;
- *Step 2* – Raise the vehicle, and remove the original upper pivots;
- *Step 3* – Fit the new brackets to the control arm, but do not tighten the pivot bolts at this stage. After deciding to increase or decrease the amount of caster or camber, fit the required shim stacks supplied to the front and/or rear brackets;

Check kit for contents:

- 3 x 6mm Thick Shims
- 2 x 3mm Thick Shims
- 4 x 1.6mm Thick Shims
- 2 x Replacement Brackets
- 4 x Hex Lock Nuts

Note: This kit has 2 mounting positions and will fit AU,BA,BF&FG Falcons

- Choosing either the AU, BA, BF or FG mounting holes (see photo next page) Re-assemble the control arm to the chassis, making sure the shims are located correctly. Tighten the inner four mounting nuts to 35Nm. Replace the wheels, lower the vehicle, and tighten the two inner pivot bolts to 35Nm;

Note: Tighten the two inner pivot bolts with the vehicle at finished ride height.

- Wheel-alignment must be performed on the vehicle after the kit is fitted.

Sports Lowered suspension		Standard Suspension	
Camber	-1.0° ± 0.3°	Camber	-0.5° ± 0.3°
Caster	+7.0° ± 0.4°	Caster	+6.8° ± 0.4°
Toe	Total in 1mm ± 0.5mm	Toe	Total in 1mm ± 0.5mm

Camber Change

A shim stack of 9mm fitted or removed from the front and rear bracket together changes the camber approx. 1°.

Caster / Camber Change

A shim stack of 6mm fitted or removed to the Front bracket only. Changes the caster approx. 1° and also changes the camber approx. 0.3°.

A shim stack of 6mm fitted or removed to the Rear bracket only. Changes the caster approx. 0.5° and also changes the camber approx. 0.5°.

Special Note: Some XR6 and XR8 vehicles may have factory modified inner pivot brackets fitted standard and only require shims to adjust the alignment settings.

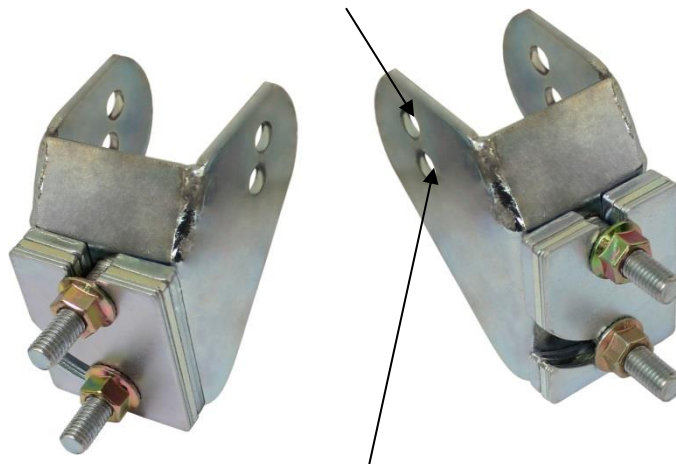
See over page for additional shim packs if required.

Fitting Instructions #3227IS

Extra shims are available in packs of 10. The following sizes are available:

1.6mm Thick	Part #1600-1.6K
3.0mm Thick	Part #1600-3K
6mm Thick	Part #1600-6K

As stamped AU,BA & BF
mounting hole



As stamped FG mounting hole

