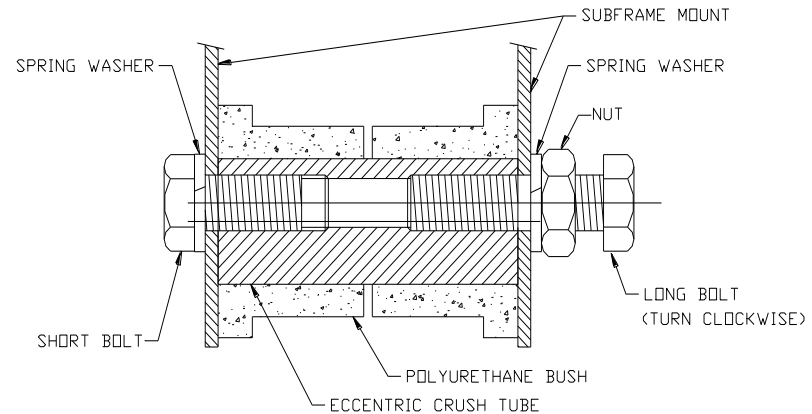


# Fitting Instructions #1855IS

## Volkswagen Transporter / Caravelle

### IRS Adjusting Camber & Toe Kit

- Take alignment readings first (to determine best settings to reduce tyre wear);
- Jack vehicle and support body on stands. Disconnect lower shock absorber mount and remove spring. Re-attach lower shock mount and remove inner pivot bolts. NOTE: Be careful not to overstretch brake hose;
- Press original bushes from trailing arm using suitable pressing tools. Clean any flaking paint and rubber from hole, smear a light amount of grease on bushes and fit to trailing arm. Fully grease bush and tube before pushing tube into bush;



- Recommended Setting Camber: 0.5 DEGREE NEGATIVE.
- Toe in: +3mm TOTAL.

- As per diagram reconnect arm. If the inner position has slotted chassis holes, flat washers are provided to cover the slot and enable the spring washer to work effectively. (These slots will still allow independent toe adjustment to be performed.) Ensure that long bolt (fitted with nut and washer) is positioned to the side with the most access. Screw long bolt in completely until it bottoms out in the thread and starts to turn the eccentric crush tube;
- Wheel Align by turning the long bolt clockwise to obtain desired alignment settings. Short bolt and nut must be loosened while adjusting (Take care approaching alignment settings, as adjustment is only effective in a clockwise direction);
- Adjust toe equally, as adjustment alters track width;
- When desired settings are achieved, tighten short bolt first followed by locknut (tighten to original manufacturers torque specifications).