

Fitting Instructions #TRC0046IS

- Holden Colorado RG 11/2011-on

- Isuzu D-max 05/12-on

Handbrake - Relocation



Within this kit there are 2 different leaf spring relocation kits. Depending on which type of leaf spring you have installed will depend on the type of relocation kit that is required.

If your leaf spring looks like Figure 1 then go to Page 2 and follow the install instructions outlined and discard any leftover parts.



Figure 1: Spacer relocation kit

If your leaf spring looks like Figure 2 then go to Page 3 and follow the install instructions outlined and discard any leftover parts.

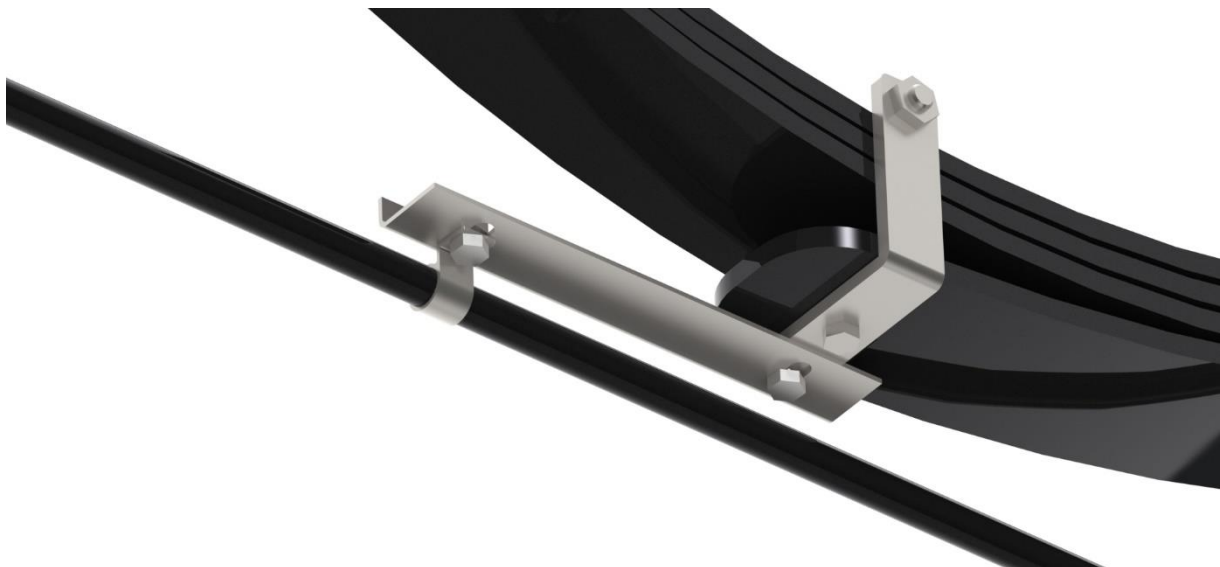


Figure 2: Bracket relocation kit

Fitting Instructions # TRC0046IS

Important Note: These components must be fitted by qualified persons only, to factory specifications, as per factory service manual.

Installation Instructions:

Each leaf spring requires the following spacing components: 1 x tube, 1 x washer and 1 x bolt.

Undo OE bolt holding handbrake bracket to front of leaf spring;

Fit tube between leaf spring mount and bracket (see picture);

Use washer between bolt head and bracket (see picture);

Tighten bolt to OE specifications;

Fit to both sides of vehicle.



Fitting Instructions # TRC0046IS



Contents - 2x extension brackets

- 2x M8x1.25x15mm bolts
- 2x M8x1.25 nyloc nuts
- 4x flat washers

This product is for raised vehicles only

- Raise vehicle evenly and safely support.

Never rely on a Jack only

Note - you may be able to access bracket while car is on the ground.

- Un-bolt hand-brake cable from underneath leaf spring (cable is bolted to leaf spring)
- Bolt up new bracket to leaf spring with original bolts.
- Bolt up hand-brake cable OE bracket to new bracket with supplied hardware.

Note - new bracket will run in-line with leaf spring - pointing to front of car

- Re-check bolts after 100kms

