

Fitting Instructions #2865IS

Holden Commodore VE

Rear, Rear Lower Control Arm Inner Bush

Note: Polyurethane bushing **MUST** be fitted to both sides of the car

- Raise vehicle up with hoist or jack stands;
- Unbolt the lower shock mount from the rear lower control arm;
- Unbolt the rear lower control arm from the subframe and hub and remove the arm. Removed arm should look as shown in Figure 02;
- Using suitable pressing tools and an arbour press, remove the inner bush from the control arm. Refer to Figure 02;
- Ensure the bush housing is clean before installing polyurethane bushing;
- Press the bushing into the arm until the bushing sits in the arm as shown in Figure 03;
- Liberally grease the inner bore of the bush and the outside of the crush tube, then press the crush tube into the bush;
- Re-install control arm into the vehicle;
- Re-install lower shock mount bolt to the control arm;
- Torque all bolts to manufacturer's specification;
Note: It is recommended that a wheel alignment is conducted after the installation;
- Check bolts after 1 month or 1000km.

SPF2865K

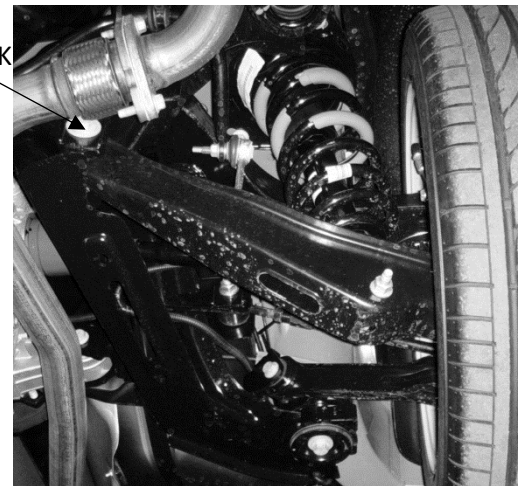
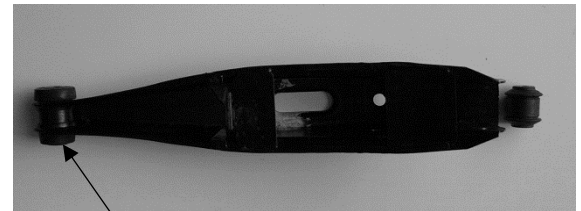


Figure 01 – SPF2865K application



Remove

Figure 02 – OE control arm

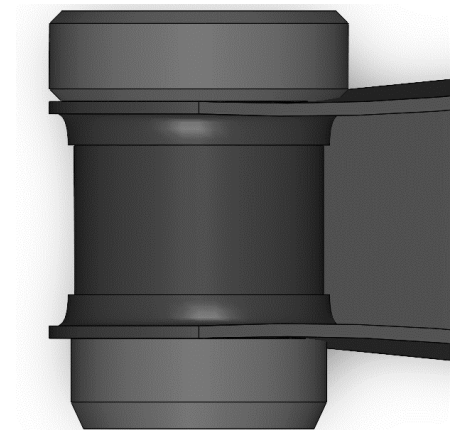


Figure 03 – SPF2865 pressed into arm