

# Fitting Instructions #5300IS

## VW VAG PQ46 Platform

### Front Lower Control Arm Rear Standard Replacement Bracket Kit

**Note:** Bracket Kit must be fitted to both sides of the vehicle.

- Wheel-align the vehicle before the job is started and note settings.
- With the vehicle on jack stands/hoist, remove the lower control arms.
- Remove the original brackets with the bushes from the rear position of the arm.
- Apply the grease supplied to the inside bore of the small black insert bushing. (Figure 01)
- Press the insert onto the rear position of the arm over the hexagonal shaft until flush. (Figure 02)
- Generously apply the grease to the outside of the insert as well as the inside of the blue bushing.
- Aligning the flange on the blue bushing towards the arm as in Figure 02
- Press the bracket onto the insert with the thicker bracket section towards the outside of the car shown in Figure 04.
- Fit arms back into car, following the manufactures recommendations.
- Wheel-align the car and check the settings.

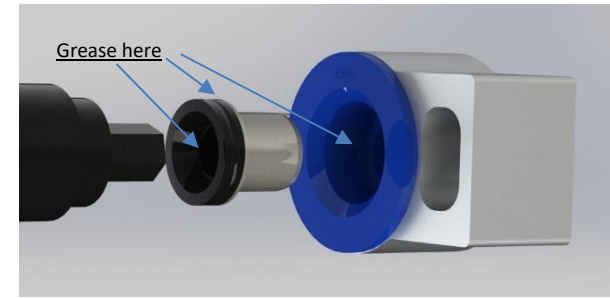


Figure 01

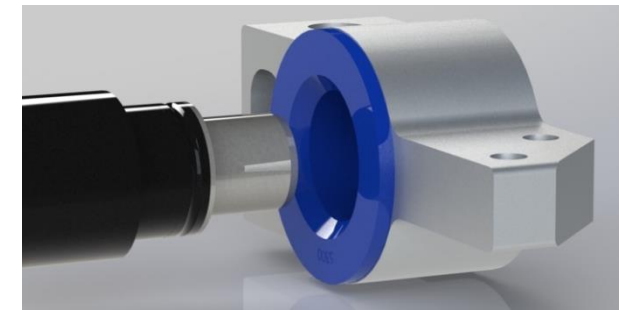


Figure 02

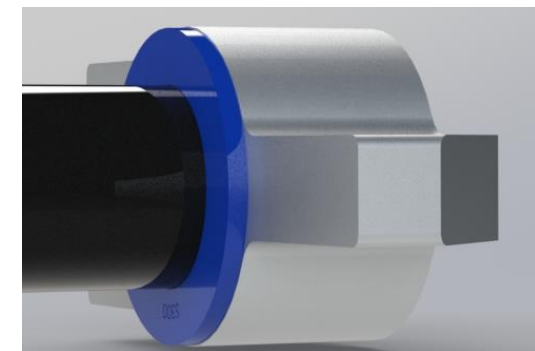


Figure 03

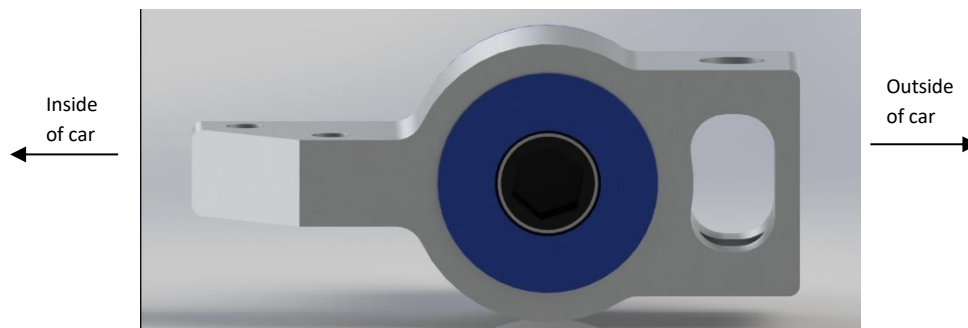


Figure 04