

Fitting Instructions #RC0022RZIS

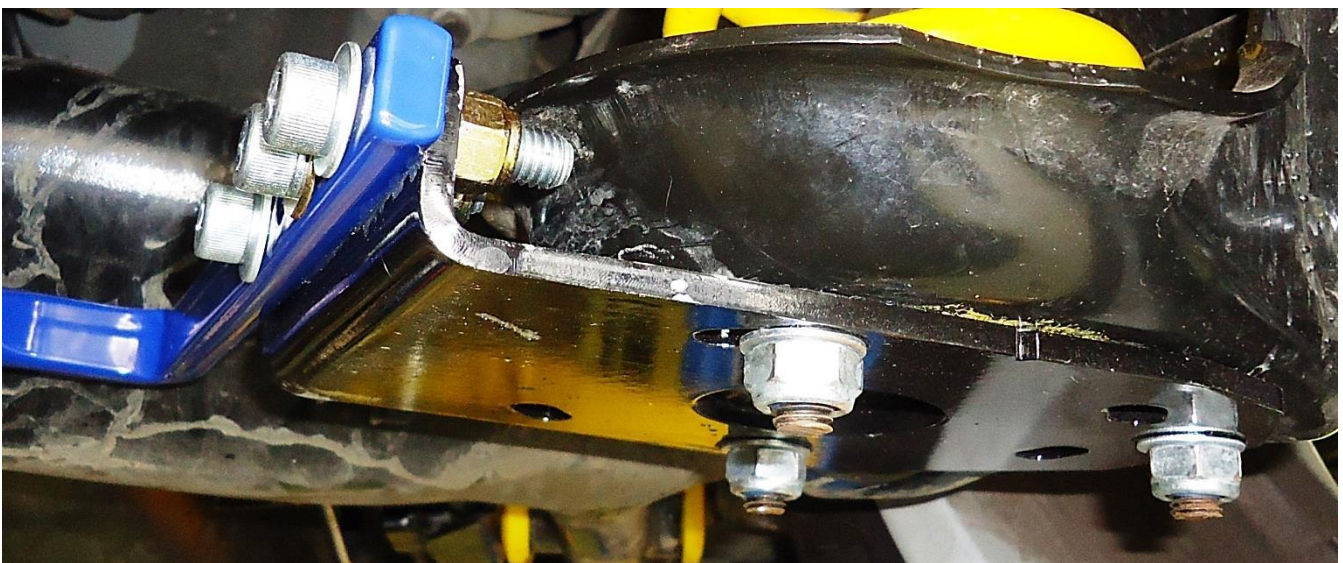
Renault Megane

Sway Bar Stabiliser Kit

This work should be carried out by qualified persons.

- Raise vehicle and support on Jack stands. Remove the stone guard covering the rear beam.
This cannot be refitted;
- Supporting the rear beam, undo and remove the bottom shock bolts;
- Lower the beam far enough to remove the springs. Be careful not to over stretch the brake hoses or the ABS cables;
- Familiarise yourself with the hardware supplied. Note: Brackets and rings are marked Left and Right;
- Now attach the lower bracket,(CB238L and R) using 10mm Button head bolts supplied. Bolts are fitted from the top. Leave the bolts loose at this stage. Repeat on the other side.

Note: Fold on the bracket points up.



Fitting Instructions #RC0022RZIS

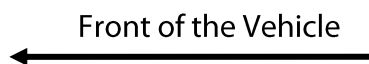
- Depending on bar position required attach the bar using 3x10mm Cap screws per side.
Leave bolts loose.



Standard position



Full hard position



Front of the Vehicle

- Tighten all Bracket bolts first and then tighten the bar bolts.

Torque Button head bolts to approximately 24.5nm and 10mm cap screws approximately 46nm.

Note: A drop of Loctite is recommended on all bolts.



Please drive carefully to get used to the new handling characteristics.

Super Pro Roll Control does not take responsibility for incorrect fitment or misuse of this product.

Pictures are indicative and are not necessarily exact to the B.O.M