

Fitting Instructions #4695IS

Ford Mondeo MA

Front Lower Control Arm Rear Bushing (To suit Right-hand drive vehicles)

By offsetting the location of the rear pivots, caster variation & anti-lift can be achieved.



To Front of



Rear bushing in bracket.
Note bush is oil-filled

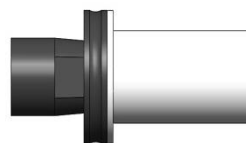
Note: Polyurethane bushes must be fitted to both sides of the vehicle.

- Wheel align the vehicle before the job is started and note castor settings;
- Mark the control arms & bracket orientation then remove the control arms from the vehicle;
- The O.E. rubber bush is a hydraulically filled bush. Appropriate safety precautions must be taken to avoid injury. To remove the rear bushing put the arm in a press, then press on the peg of the arm. This will free the bracket from the control arm;
- Place the rear bracket on the press, then press on the centre of the bush to tear away the rubber bond. Repeat this process to remove the remaining rubber bush in the bracket and cut the O.E. shell out.
- With reference to the diagrams, the kit number that you have purchased and the settings required, align the bushing and the brackets, so that the hole in the bushing is positioned to give the desired result. Then press the bush into the bracket ensuring the edge of the shell sits flush on the bracket;
- Mount the control arm in a vice. Install the part A steel shell bush '4695A' with the **flange going in towards the arm**. Then, use a mallet to tap it onto the arm;
- Then trial fit the control arm and bracket to the car to check bolt hole alignment, if the bolts line up for the rear bracket proceed to the next step, if not press the bush in/out the required amount. This is done due to variations in cross members and also to prevent adding any preload to the bush;
- Lubricate the inside of the new polyurethane bushing and the outside of the part A steel shell bushing, then, slide the bushing & bracket over the part A steel shell bushing. (Note - Make sure that the bracket is orientated correctly as how it is originally);
- Refit the control arms with the new bushes, brackets into the vehicle;
- Wheel align vehicle and check new settings;
- Torque all mounting bolts to manufactures specifications with the vehicle at ride height.

Side view of new part on control arm



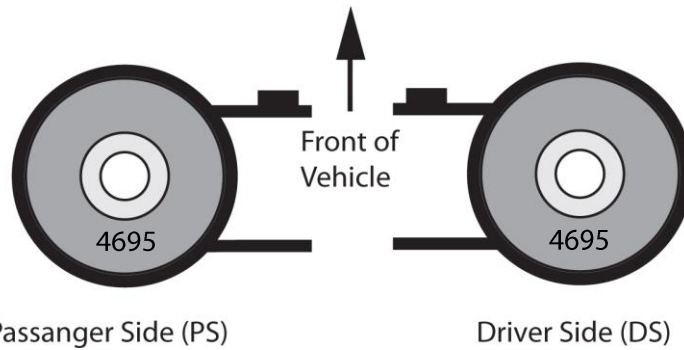
1. Push Part A Steel Shell Bush onto Peg



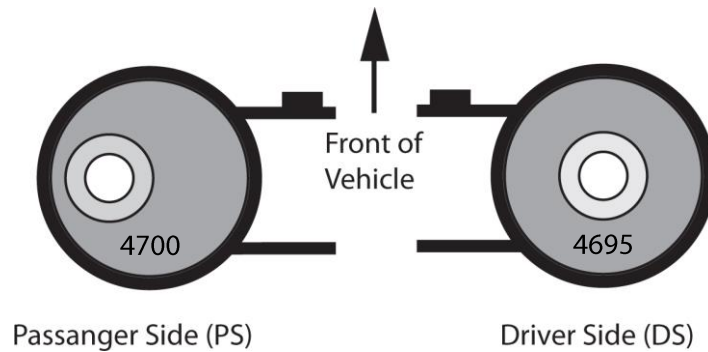
2. Slide Bush/Bracket over Part A Steel Shell Bush

As viewed from the rear of the control arm, looking forward on rear bushing

Kit #4695K – Standard Replacement (No caster change)



Kit #4699K – To Counteract a slight pull to the left
Caster Correction 0.4 change



Kit #4700K – To Counteract a strong pull to the left

