

Fitting Instructions #3270-80AIS

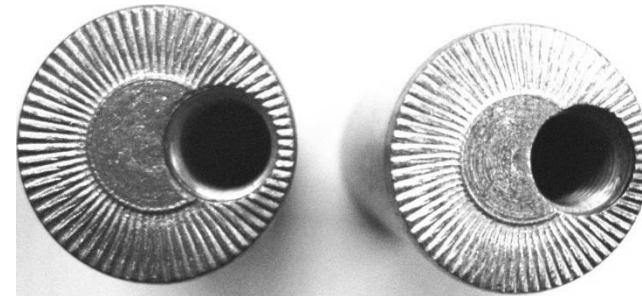
Mercedes Vito W639 (Second Generation)

Front Lower Control Arm Front Inner Eccentric Bushing

Note: Polyurethane bushings must be fitted to both sides of the vehicle;

- Wheel-align the vehicle before the job is started and note settings;
- With the vehicle on jack stands and the wheels unsupported, remove the lower control arms;
- Remove the original bushes including the steel shell. Clean the bush mounting hole of any rust or scale;
- Apply white grease to the inside of the arm and the outside of the new bush. Push the new bush into the arm;
- Apply the white grease supplied to the bore of the bush and the steel crush tubes. Push in the crush tubes (Note if you have purchased SPF3024XK you can stagger the crush tubes to +/- caster;
- Refit the control arms to the car, making sure you tighten the bolts with the arm held at 90 degrees to the mounts to give you the maximum camber/caster offset;
- Re-assembly the rest of the car. Carry out a wheel alignment.

Note: manufactures torque setting must be used on all bolts and nuts.



Drivers side

Passenger side

Offset view looking from the front of Vehicle

This fitment creates a positive caster split of approx. 0.8 degrees.
Set wheel alignment with 0.5 degrees more negative camber on left.