

Fitting Instructions #TRC5000IS

Volkswagen MKVII Golf

Fixed Camber Upper Strut Mount

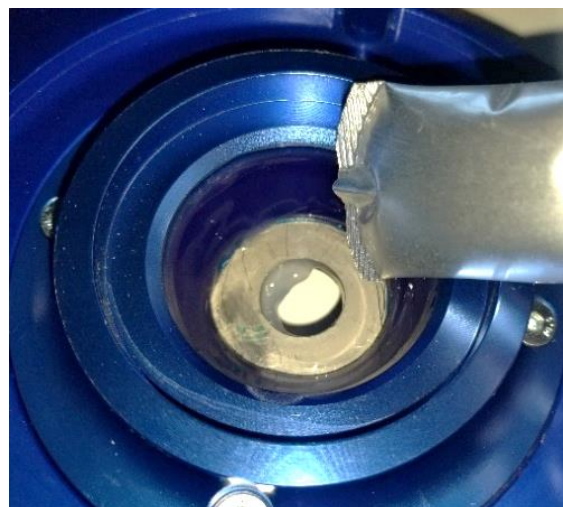
- Jack vehicle up and put on stands/hoist, remove the front strut;
- Remove OE rubber isolator;

Note: SuperPro grease is included in the kit and will be used shortly. The assembled mounts are internally lubricated during assembly. There is no need to disassemble the TRC5000 prior to installation.

- Align notch on TRC5000 top mount to the coil over thrust bearing;



- Using the included grease packet, liberally grease the exposed blue polyurethane isolator on the underside of the TRC5000 mount;



- Insert shock stud through the washer in the centre of TRC5000 upper mount.
- Using the original fastener, tighten top mount down onto strut (**Torque Spec: 60Nm**).
- Confirm TRC5000 and thrust bearing notches are aligned.



- Install the strut assembly into front of vehicle and use supplied fasteners to secure top of strut to the body (**Torque Spec 12 Nm**).
- When both sides are installed, carry out a wheel alignment.

Note: If aftermarket springs have been fitted to the vehicle carefully inspect the vehicle for adequate clearance between the spring and all locations of the inboard wheel housing and strut tower.

