

Fitting Instructions #TRC1017 IS

Holden Captiva

Front Lower Control Arm

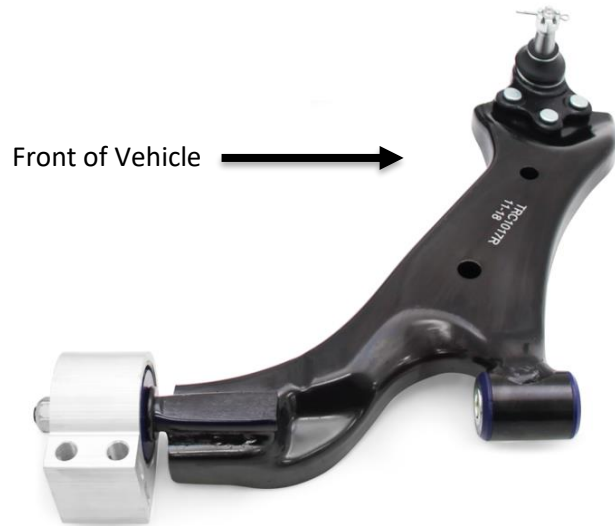


Figure 1: Holden Captiva Front Lower Control Arm (Left)

Note: TRC1017 arms must be fitted to both sides of the vehicle.

- Wheel align the vehicle before the job is started and note caster settings;
- Place vehicle on hoist;

Note: The kit comes as a complete arm replacement assembly with the front and rear bushing installed. The subframe doesn't need to be removed or lowered.

- Remove the front bush bolt, detach the arm from the ball joint on the upright, remove the rear bush bracket and then remove the OE lower control arm;
- Install the left and right hand side control arms to the car with the reverse procedure used to remove the OE arms;
- Torque all mounting bolts to manufacture's specifications;
- Wheel align vehicle and check caster settings.

Superpro
Suspension Parts

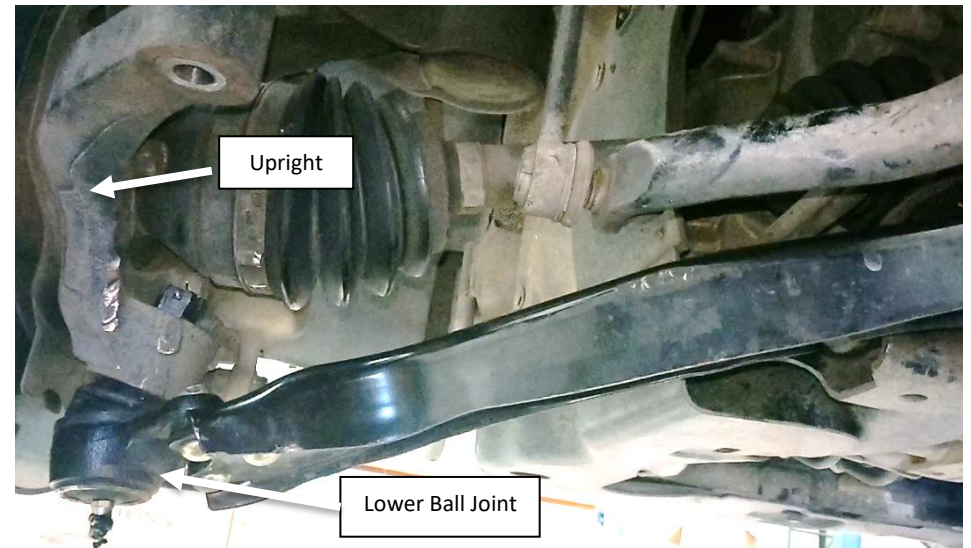


Figure 2: View from underneath of the vehicle - Left Hand Side Control Arm assembly installed

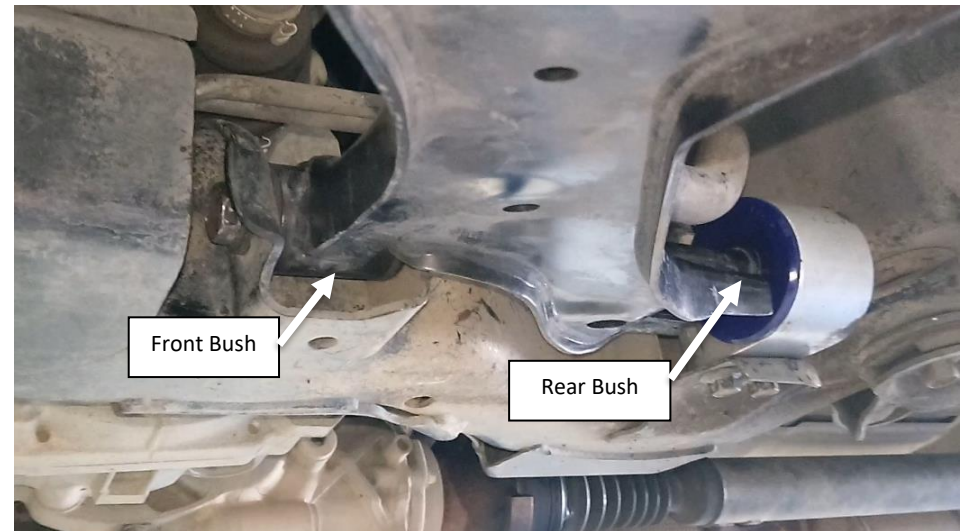


Figure 3: View from underneath of the vehicle - Left Hand Side Control Arm assembly installed