

Fitting Instructions #4612IS

Mazda E2000

Front Control Arm Upper Bushing



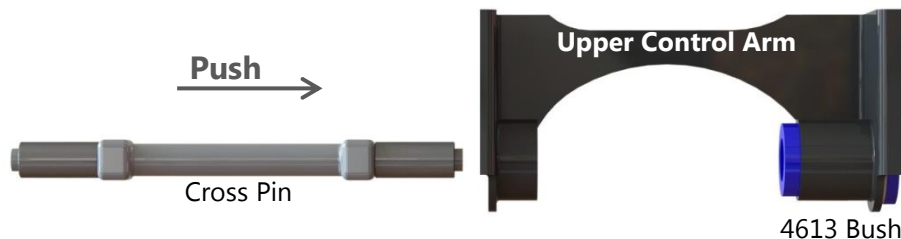
Note: Polyurethane bushings must be fitted to both sides of the vehicle.

- Jack vehicle up and put on stands/hoist, following manufacturer's recommendations, remove the front upper control arm;
- Using suitable pressing tools, remove the factory bushes. Care must be taken to not damage the arms;
- Clean housing areas to remove any old original bushing materials before installing new bushes;
- The figure below shows the procedure of installing the polyurethane bushes:

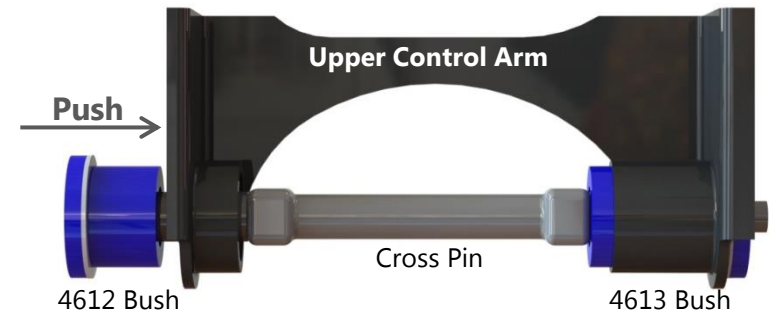
1. Install 4613 bush by pressing it into the arm.



2. Press the supplied crush tubes onto the cross pin first, and then, install the cross pin into the control arm.



3. Install 4612 bush into the arm.



Arm assembly after new bushes are installed



- Re-use the factory washers on the front upper control arm and tighten the bolts to manufacturer's torque specifications.
- Refit the front control arm to the vehicle and carry out a wheel alignment