

# Fitting Instructions



SKU

PRODUCT

**TXR817**

**TAG 4x4 Recovery Towbar to suit Suzuki Jimny (11/2018 - on)**



Scan for latest version of these instructions

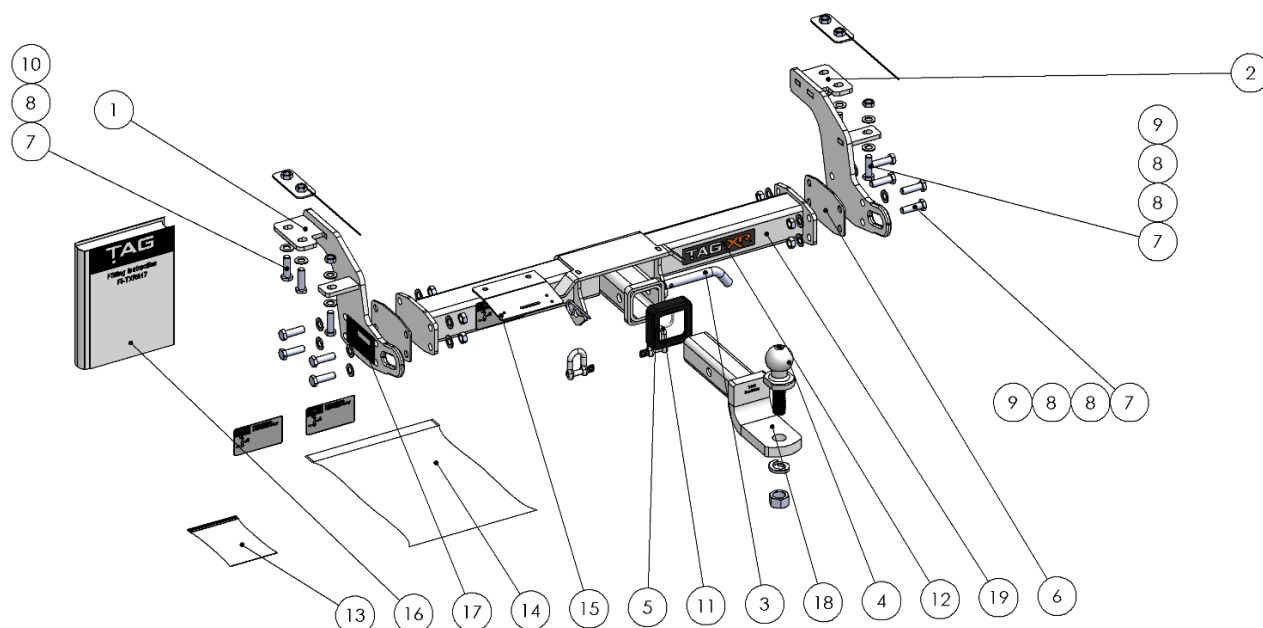
## SPECIFICATIONS

- Towbar Class: Extreme Recovery
- Towing Capacity: 1300kg

## IN THIS GUIDE

- Fitment Instructions
- Torque Settings
- Warranty Info

# Towbar Fitting Instructions



Tools required: Spanners, Sockets, Screwdriver, Torque wrench

ITEM NO.	DESCRIPTION	QTY.
1	End Plate subassembly PS TXR817	1
2	End Plate Sub Assembly DS TXR817	1
3	Class 4 Pin & Clip	1
4	TAG Tow Ball Zinc Plated 50mm 3.5 Tonne	1
5	Cover Hitch Receiver Collar TAG	1
6	End Cap spacer TXR817	2
7	M12x1.25x40 Bolt	14
8	M12 Flat Washer Zinc Clear	24
9	M12x1.25 Nut	10
10	Nut Plate M12x1.25 Nuts & 250 wire	2

ITEM NO.	DESCRIPTION	QTY.
11	TAG D-Shackle - 10mm, 1000kg, Galvanised	2
12	TAG XR Sticker 150 x 33mm	1
13	Poly Bag Resealable 150x100mm	1
14	Poly Bag 260x375mm	1
15	TAG Compliance plate	3
16	Fitting Instruction	1
17	Tag WLL Sticker (Blank)	1
18	L4180 Ball Mount	1
19	Towbar Centre Section TXR817	1

## Step-By-Step Instructions

### Warning:

- This product is for towing purposes only and must only be loaded as shown in your vehicle Owner's Manual.
- This towbar is NOT to be drilled, cut, welded, or modified in any way.
- Check behind chassis rail and body panels before drilling to ensure no hazards are present
- All load ratings shown are under the assumption your trailer has a functional braking system installed
- When installed in positions other than the one depicted in these instructions the Tow Ball Mount may interfere or obstruct certain features of your vehicle (tailgate opening, chassis clearance, etc.)

### General:

- Before fitting this towbar read fitting instructions and check installation hardware is correct.
- Check that the towbar is suitable for the vehicle and be wary of any changes to the vehicle design that may conflict with the fitting of this towbar. (Tray, Canopy, Suspension etc.)
- After drilling, blow any filings clear, remove any swarf and treat exposed metal with a rust inhibitor.
- The high tensile fasteners supplied with this product are an integral feature to achieving the specified rating, if replacement is required ensure that fasteners of the same grade (8.8) & quality are used. Contact an authorised TAG distributor or the TAG fitment centre - (07) 3208 3022 - if further information is required.

### Towbar Maintenance and Care:

It is recommended, when not in use, the Tow Ball Mount assembly and class 4 Pin and Clip is stored inside the car away from moisture to prevent standing water from forming rust. Inspect to ensure, on regular basis, fasteners are torqued to the specifications below and in good condition.

**Ensure that the fitting instructions are read and understood prior to fitment**

**Place these instructions in the vehicle's glovebox after installation is completed**

# Towbar Fitting Instructions



## Step 1. Remove Bumper Bar

- a. Remove 2x Bolts Securing the bottom edge of the bumper
- b. Remove 1x bolt from each wheel arch
- c. Open the tailgate and remove 4x bolts and 2x plastic scrivenets from the top edge of the bumper.
- d. Carefully pull away from vehicle ensuring to disconnect any wiring attached to the bumper.
- e. Set aside for trimming and refitment.



# Towbar Fitting Instructions



## Step 2. Fit Towbar

- a. Lift the endplates up to the bottom of each rail. Loosely secure the rearmost lower tab to the bottom of the chassis rail with 1x M12x 30 bolts washers & nuts. Repeat on opposite side.
- b. Insert nut plates on wire into the ends of each chassis rail and align with holes in the chassis and the holes of the endplate upper tab.
- c. Loosely secure with M12x 30 bolts with washers.
- d. Lift Main bar up to the endplates and loosely secure with the remaining M12x 30 bolts, washers & nuts.

Note: If there is more than approx. 3mm clearance between the parts on each side, spacers will be required.





# Towbar Fitting Instructions



## Step 3. Cut Bumper & Reinstall

The towbar installer is ultimately responsible for the location & quality of the bumper cut. To avoid mistakes, please use the following measurements as a guide only. We suggest making small incremental cuts and regularly test fit the bumper to ensure an accurate and tidy appearance. The additional application of rubber pinch-weld around the cut edge ensures a neat & tidy look.

- The bumper does not require a hitch box cut out but 2x small notches are required on the bottom edge of the bumper.
- Locate the square hole on the bottom edge of the bumper. Measure and mark 270mm & 300mm outward. Also measure 20mm in from the edge of the bumper.
- Cut the bumper using an air saw or similar cutting device ensuring to deburr the cut edges.



## Step 4. Fit Ball Mount and Apply Door Sticker

- Attach plastic hitch surround to receiver.
- Insert ball mount into hitch receiver and secure with the pull pin and R-clip.
- Apply one of the compliance labels to the pillar of the driver's door.
- Leave the remaining label & the fitting instructions in the vehicle handbook.



## Torque table for bolt tightening

Diameter	Pitch	Grade	Torque	Unit
M8	1.25	8.8	29	Nm
M10	1.25	8.8	57	Nm
M10	1.50	8.8	44	Nm
M12	1.25	8.8	101	Nm
M12	1.50	8.8	97	Nm
M12	1.75	8.8	77	Nm
M14	2.00	8.8	122	Nm
M16	2.00	8.8	190	Nm

## TAG Warranty Statement

SWD warrants your TAG Towbar for its full product life under the following conditions:

- You can show proof of purchase.
- The towbar has been correctly installed by a suitably qualified installer.
- The towbar has not been modified or abused in any way and has only been used for the purpose intended.
- The towbar was not fitted second hand to your vehicle.

The extent of this warranty includes materials and workmanship used in the manufacture of the towbar and is to the equivalent value of current, full replacement cost.

Nothing stated or implied in this warranty limits in any way, the statutory rights that you may have.

To make a claim visit the original installer in the first instance or, if you are unable to or are not satisfied with their help, then contact us direct by phone on 1300 669122 or visit [www.swd.com.au](http://www.swd.com.au)