

# Fitting Instructions



SKU

PRODUCT

**T7M785**

## **TAG Heavy Duty Towbar to suit Mazda CX-5 (02/2012 - on)**



Scan for latest  
version of these  
instructions

### SPECIFICATIONS

- Towbar Class: Heavy Duty
- Towing Capacity: 1800kg

### IN THIS GUIDE

- Fitment Instructions
- Torque Settings
- Warranty Info

# Towbar Fitting Instructions



## Step-By-Step Instructions

### Warning:

- This product is for towing purposes only and must only be loaded as shown in your vehicle Owner's Manual.
- This towbar is NOT to be drilled, cut, welded, or modified in any way.
- Check behind chassis rail and body panels before drilling to ensure no hazards are present
- All load ratings shown are under the assumption your trailer has a functional braking system installed
- When installed in positions other than the one depicted in these instructions the Tow Ball Mount may interfere or obstruct certain features of your vehicle (tailgate opening, Chassis clearance, etc.)

### General:

- Before fitting this towbar read fitting instructions and check installation hardware is correct.
- Check that the towbar is suitable for the vehicle and be wary of any changes to the vehicle design that may conflict with the fitting of this towbar. (Tray, Canopy, Suspension etc.)
- After drilling, blow any filings clear, remove any swarf and treat exposed metal with a rust inhibitor.
- The high tensile fasteners supplied with this product are an integral feature to achieving the specified rating, if replacement is required ensure that fasteners of the same grade (8.8) & quality are used. Contact an authorised TAG distributor or the TAG fitment centre - (07) 3208 3022 - if further information is required.

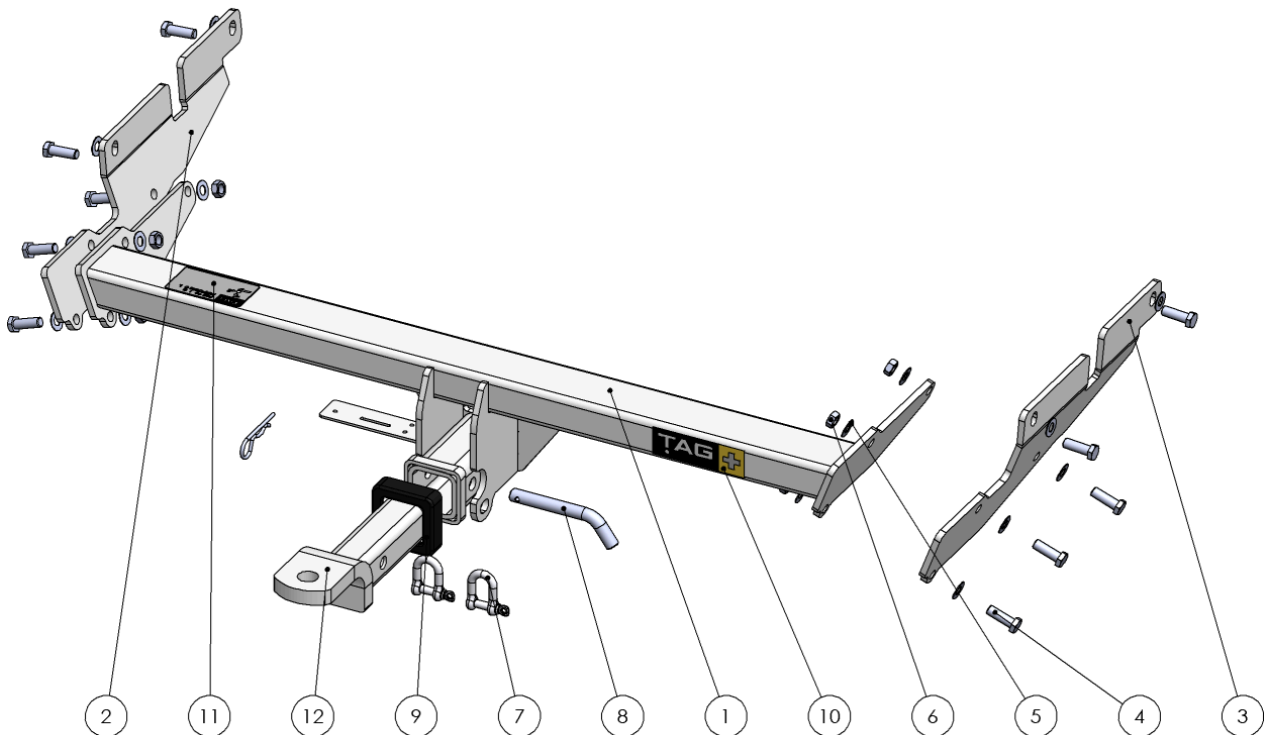
### Towbar Maintenance and Care:

It is recommended, when not in use, the Tow Ball Mount assembly and class 4 Pin and Clip is stored inside the car away from moisture to prevent standing water from forming rust. Inspect to ensure, on regular basis, fasteners are torqued to the specifications below and in good condition.

**Ensure that the fitting instructions are read and understood prior to fitment**

**Place these instructions in the vehicle's glovebox after installation is completed**

# Towbar Fitting Instructions



Spanners, Sockets, Torque Wrench

ITEM NO.	DESCRIPTION	QTY.
1	Weld Assembly T7M785	1
2	Chassis Bracket PS	1
3	Chassis Bracket DS	1
4	M12x1.25x35 Bolt	10
5	M12 Flat Washer Zinc Clear	16
6	M12x1.25 Nut	6

ITEM NO.	DESCRIPTION	QTY.
7	TAG D-Shackle - 10mm, 1000kg, Galvanised	2
8	Class 4 Pin & Clip	1
9	Cover Hitch Receiver Collar TAG	1
10	TAG + Foil Sticker 123x38	1
11	TAG Compliance plate	1
12	TAG Tow Ball Mount - L4120, 90° Face, 50mm Square Hitch	1

# Towbar Fitting Instructions



## Step 1. Remove Bumper

- a. Open tail gate.
- b. Remove taillights via 2x screws under plastic cover. Screw out the indicator bulbs. Remove the rubber grommet to access a white plug & disconnect the tail & brake & reverse lights.
- c. Remove cover directly below taillight screws & remove 1x screw.
- d. Remove T10 torx head screw from the lower boot bump stop.
- e. Retain all fasteners. Repeat on opposite side.
- f. Remove 1x scrivet from inside lower wheel arch & 2x screws from the underside.
- g. Gently pull plastic flare away from the guard.
- h. Remove 4 scrivets & 1 screw from bumper.
- i. Repeat steps a-h on opposite side.
- j. Remove 2x scrivets from lower rear of bumper.
- k. Retain all hardware.
- l. Carefully peel the bumper away from the guards on each side.
- m. Disconnect reverse sensor loom on PS.
- n. Set bumper aside for cutting.



*Trim removal tool, Phillips screwdriver, T10 Torx spanner.*

## Step 2. Fit Towbar

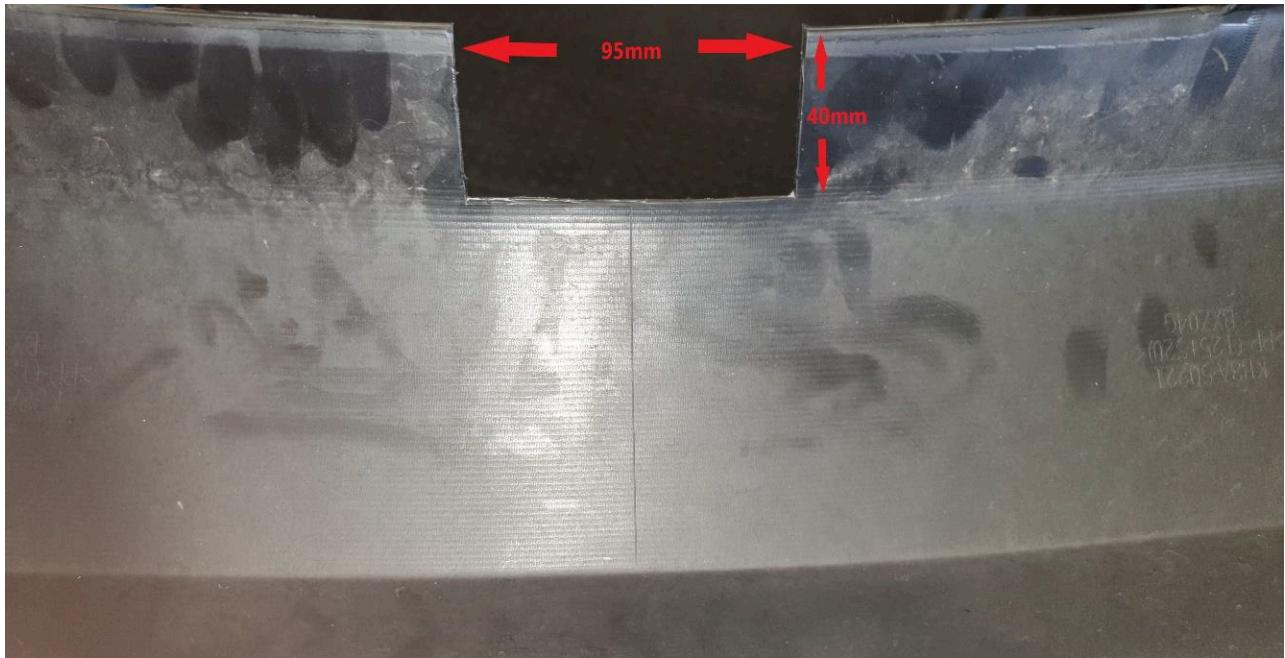
- a. Bolt the towbar end plates to the side of the chassis with M12 bolts & flat washers.
- b. Lift the towbar cross-member up to the end plates and loosely fasten with 3x M12 bolts, nuts & flat washers per side.
- c. Tighten the chassis bolts followed by the cross-member bolts.

# Towbar Fitting Instructions



## Step 3. Cut Bumper

- Find the centre of the lower bumper.
- Mark the cut-out section (95mm x 40mm).
- Using a knife or air saw cut the section from the bumper. Make sure to clean up all cut edges.
- Re-install bumper in reverse of step 1.



## Step 4. Fit Ball Mount and Apply Door Sticker

- Apply one of the compliance labels to the pillar of the driver's door.
- Leave the remaining label & the fitting instructions in the vehicle handbook.



# Towbar Fitting Instructions



## Torque table for bolt tightening

Diameter	Pitch	Grade	Torque	Unit
M8	1.25	8.8	29	Nm
M10	1.25	8.8	57	Nm
M10	1.50	8.8	44	Nm
M12	1.25	8.8	101	Nm
M12	1.50	8.8	97	Nm
M12	1.75	8.8	77	Nm
M14	2.00	8.8	122	Nm
M16	2.00	8.8	190	Nm
<b>Imperial Bolt Torque Settings</b>				
3/8"	UNC	8	44.75	Nm
1/2"	UNC	8	108.5	Nm

## TAG Warranty Statement

SWD warrants your TAG Towbar for its full product life under the following conditions:

- You can show proof of purchase.
- The towbar has been correctly installed by a suitably qualified installer.
- The towbar has not been modified or abused in any way and has only been used for the purpose intended.
- The towbar was not fitted second hand to your vehicle.

The extent of this warranty includes materials and workmanship used in the manufacture of the towbar and is to the equivalent value of current, full replacement cost.

Nothing stated or implied in this warranty limits in any way, the statutory rights that you may have.

To make a claim visit the original installer in the first instance or, if you are unable to or are not satisfied with their help, then contact us direct by phone on 1300 669122 or visit [www.swd.com.au](http://www.swd.com.au)