

# Fitting Instructions



SKU

PRODUCT

**T2T578**

**TAG Standard Duty Towbar  
to suit Toyota Tarago  
(03/2006 - on)**



Scan for latest  
version of these  
instructions

## SPECIFICATIONS

- Towbar Class: Standard Duty
- Towing Capacity: 1200kg

## IN THIS GUIDE

- Fitment Instructions
- Torque Settings
- Warranty Info

## Step-By-Step Instructions

### Warning:

Safety First: Always use correct safety equipment.

This towbar is NOT to be drilled, cut, welded or modified in any way.

Check the surrounding area before drilling into chassis or body panels for fuel lines, wiring harnesses and other components that may be a hazard.

### General:

Before fitting this towbar read fitting instructions and check installation hardware is correct.

Check that the towbar is suitable for the vehicle and be wary of any changes to the vehicle design that may conflict with the fitting of this towbar.

After drilling, blow any filings clear, remove any swarf and treat exposed metal with a rust inhibitor.

If this vehicle requires a bumper cut out, please check to make sure that you measure twice and check twice before cutting any panels as some bumper profiles can change.

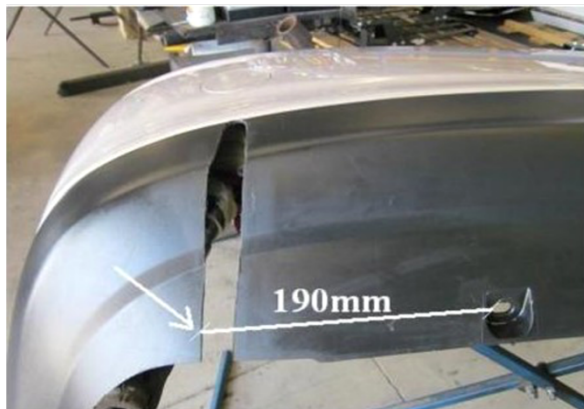
If you are not sure then ask your towbar supplier.

Tighten all bolts as specified on the last page.

1. Remove bumper by removing 1x screw from wheel arch on both sides.
2. Open boot and remove 1x bolt from each side.
3. Remove 5x plastic clips from underside of bumper.
4. Gently peel bumper away from wheel arches on both sides and remove bumper.
5. Remove hardware from the tow bar and offer to vehicle. Loosely fit 1x bolt on both sides then fit all three on exhaust side first then repeat on other side. Tighten all bolts. 6) Mark out bumper as per diagram.

ECU MUST BE FITTED WITH THIS TOW BAR. ECU SOLD SEPARATELY.

# Towbar Fitting Instructions



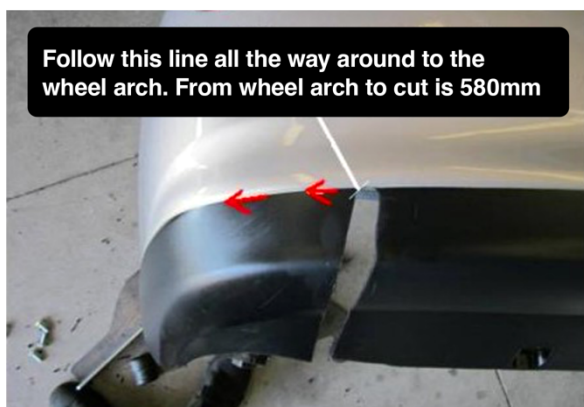
## Passenger side

Mark out, then draw a straight line between marks, then mark 25mm towards centre

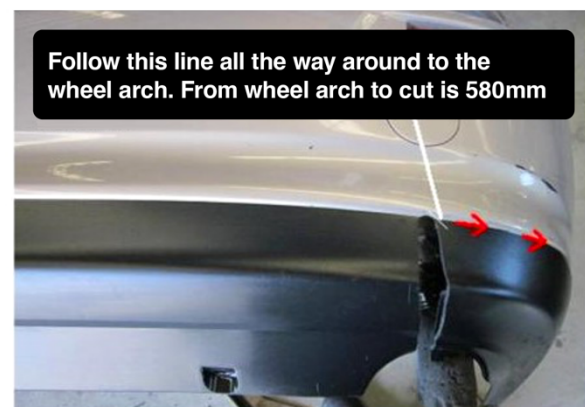


## Driver's side

Mark out, then draw a straight line between marks, then mark 25mm towards centre



Follow this line all the way around to the wheel arch. From wheel arch to cut is 580mm



Follow this line all the way around to the wheel arch. From wheel arch to cut is 580mm

# Towbar Fitting Instructions



## Torque table for bolt tightening

<b>Metric GRADE 8.8</b>
M6 – 9.5 Nm
M8 – 21.7 Nm
M10 – 43.4 Nm
M12 – 77.3 Nm
M16 – 189.8 Nm

## **TAG Warranty Statement**

SWD warrants your TAG Towbar for its full product life under the following conditions:

- You can show proof of purchase.
- The towbar has been correctly installed by a suitably qualified installer.
- The towbar has not been modified or abused in any way and has only been used for the purpose intended.
- The towbar was not fitted second hand to your vehicle.

The extent of this warranty includes materials and workmanship used in the manufacture of the towbar and is to the equivalent value of current, full replacement cost.

Nothing stated or implied in this warranty limits in any way, the statutory rights that you may have.

To make a claim visit the original installer in the first instance or, if you are unable to or are not satisfied with their help, then contact us direct by phone on 1300 669122 or visit [www.swd.com.au](http://www.swd.com.au)