

Install Guide

Ride Height Sensor Bracket

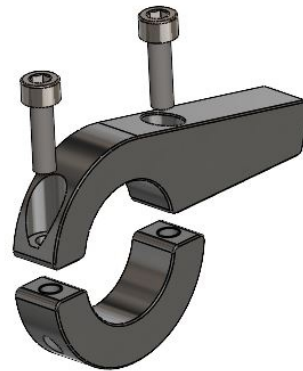


This product is designed to suit **WHITELINE** product KTA334 - for vehicles with Air Suspension

Application - Toyota Land Cruiser
- 300 Series

(Always refer current catalogue listing)

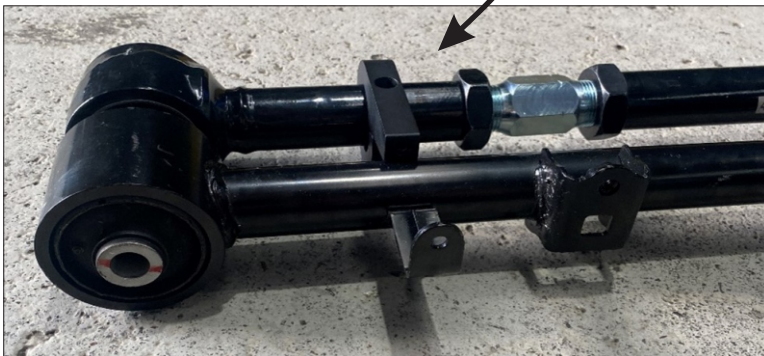
Contents - Aluminium clamp x2
- Screws x4



- Raise vehicle evenly and safely support. Never rely on a jack only.
- Place the adjustable arm next to the factory arm for reference.

Important - if this is the first time this arm is to be installed to vehicle, check the new arm is same length as original arm for base line reference.

- Bolt up supplied aluminium bracket as per below image.
- Tighten clamps with supplied M6 bolts.



Tip - be careful when tightening the M6 bolts.

Tighten both sides (evenly). Note the gap on both sides is similar.

- Tighten to approx 10Nm (7.5 ft.lbs)
- Bolt arms to vehicle using original bolts, then thread the headlight sensor into the threaded hole on new bracket until it is flush.

It is recommended that a licenced workshop or tradesperson carry out the above procedure and that workshop manual and relevant safety procedures are followed in addition to the above.