

Install Guide

Front Control Arm - Inner Bushing

- Raise vehicle evenly and safely support with a hoist or stands.

Never rely on a Jack only

- Proceed to remove front wheels.
- Loosen ball joint nut.
For VT1 models - simply remove bolt and slide ball joint out from hub. Lubricant can assist.
For VX on models - whack the hub (with nut still on threads) to break the ball joint taper.

- Loosen radius rod nut (large nut).
- Loosen and remove inner nut and bolt. Remove arm from vehicle.
- Press out old inner bushing.
- Press in new bushing 0842 into clean control arm. A press using flat surfaces and soapy water can assist.

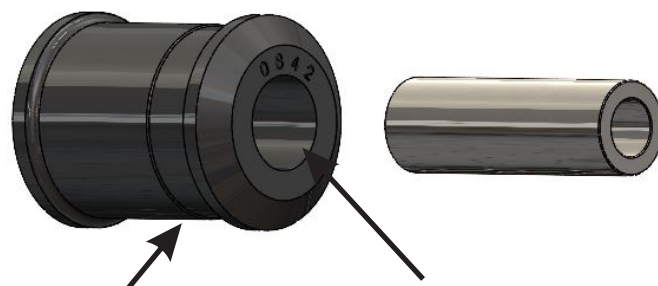
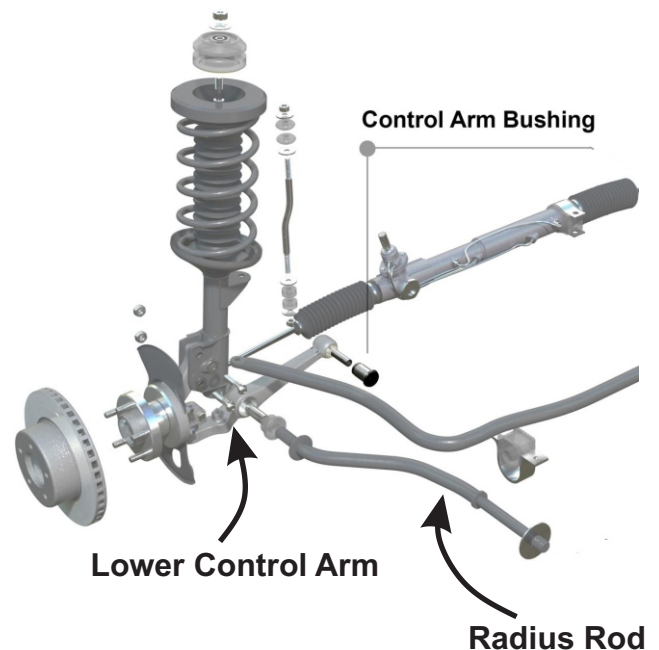
Note - the control arm eye will have a stepped internal diameter. Refer image below.

- Grease bushing internal diameter and side faces with supplied grease only.
- Push in supplied steel tube.
- Re-fit arm to vehicle using original hardware.
- A wheel alignment is recommended.
- Re-check all bolts after 500kms

Application - Holden Commodore 1993-1997
- VR to VS various models

(Always refer current catalogue listing)

Contents - Bushing 0842 x2
- Steel tubes 20x12x61mm x2
- Grease



Note stepped bushing OD

Grease bushing ID

Note: These components must be fitted by a qualified person only, as per the manufacturers service manual. Also, that all relevant safety procedures are followed in addition to above.