



Instructions

Rear Swaybar Kit

This instruction sheet should be used in conjunction with the workshop manual and proper safety procedures followed.

Application - Hyundai i20N
- 2020-on BC

(Always refer current catalogue listings)

Note - some drilling is required

- Start by raising the vehicle evenly and safely support with jack stands.

Never rely on a Jack only

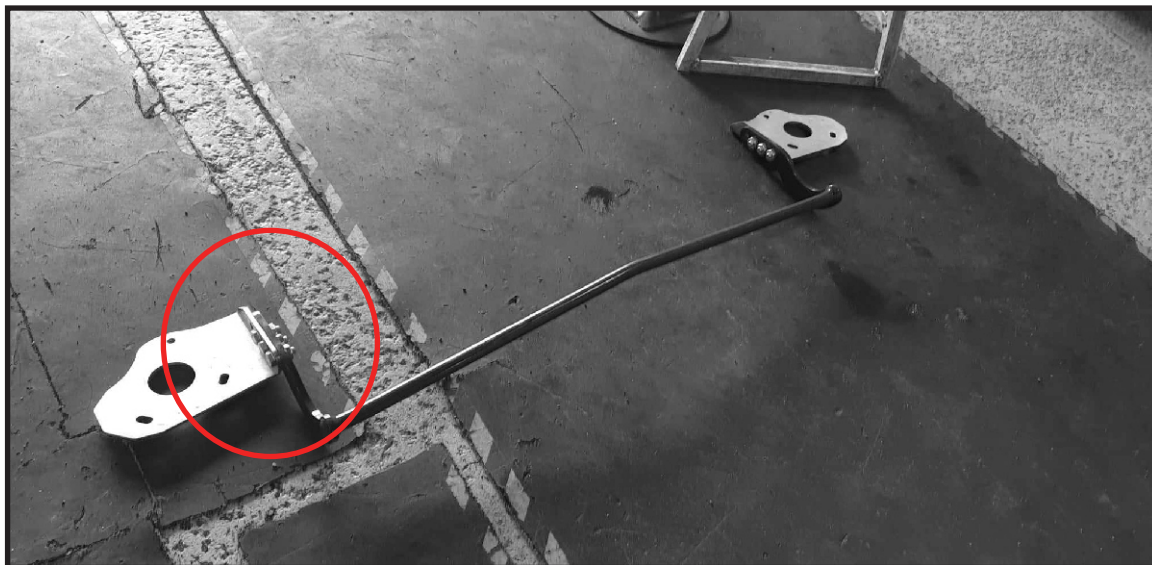
- Proceed to remove rear wheels.
- Using the supplied hex bolts, nyloc nuts and washers, bolt the swaybar up to the brackets as per below image.

Contents - 1x 18mm swaybar
- 2x steel plates (LH & RH)
- 6x hex head bolts
- 6x button head bolts
- 12x nyloc nuts
- 6x flat washers



Note below image displays the 3x bolts in “hard” setting.

Refer page 2 -



It is recommended that a licenced workshop or trades-person carry out the above procedure and that workshop manual and relevant safety procedures are followed in addition to the above.

Instructions Rear Swaybar Kit

This instruction sheet should be used in conjunction with the workshop manual and proper safety procedures followed.

- Support the beam axle with a stand or jack with timber. This is to support the spring load.

With stand supporting the spring load, now you can unbolt the lower shock bolt.

- Lower the beam down so to remove the rear springs.
- Lift the swaybar assembly up to meet the spring platforms. It may be best to ask for some assistance here.
- Use a texter to mark the platform - as to where to drill the 3 holes for the supplied button head bolts.



- Use a small drill bit for a pilot hole. Then finish off with a M10 drill bit.

Refer LH and upper images.

Refer page 3 -

It is recommended that a licenced workshop or trades-person carry out the above procedure and that workshop manual and relevant safety procedures are followed in addition to the above.

Instructions

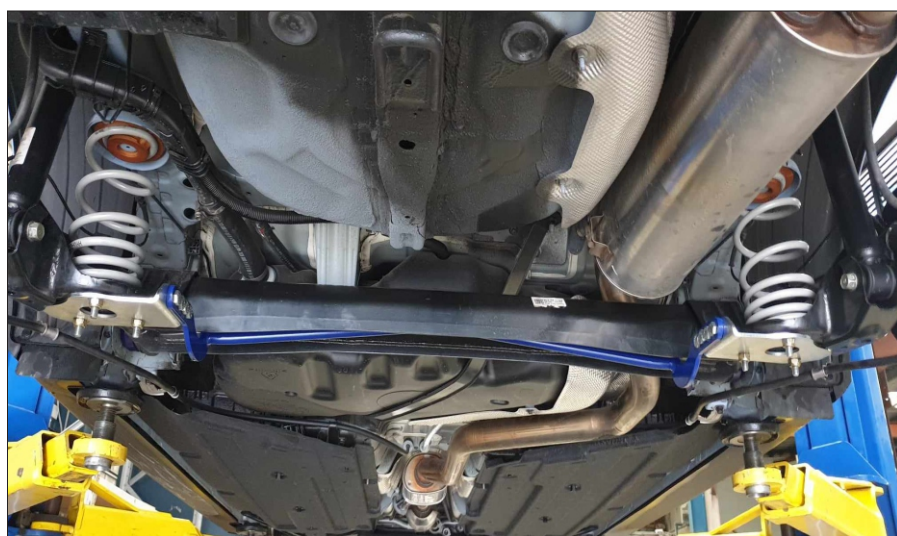
Rear Swaybar Kit

This instruction sheet should be used in conjunction with the workshop manual and proper safety procedures followed.

Note - for illustration purpose, see 4x bolts used below.
This kit is supplied with 3x swaybar bolts per side.

Place 3x bolts closest to the front of vehicle for hard.
Place 3x bolts closest to end of swaybar for soft.

- Bolt up the brackets to the vehicles spring platform using the 6x button head bolts - with nyloc nuts.
- Next, pop the springs back in the vehicle.
- Refer RH and below images.



- Road test the vehicle.
- Re-check all bolts after 500kms

It is recommended that a licenced workshop or trades-person carry out the above procedure and that workshop manual and relevant safety procedures are followed in addition to the above.